



WAVES WASH OVER
ANA BENAVIDES & KATHERINE QIYU SU

WILDER

WAVES WASH OVER | Ana Benavides & Katherine Qiyu Su

19 June- 17 July 2024

Drink reception Wednesday 3rd July 6.30-8.30pm

Brushstrokes curl and unfold across the canvases of Katherine Qiyu Su and Ana Benavides, exploding and fragmenting with surges of vibrant energy. *Waves Wash Over* brings together new work by these emerging artists whose practices use the language of abstraction to translate complex emotions and memories into compelling visual forms.

Ana Benavides cites the richness of the environments of her childhood in Mexico as key sources of inspiration, as well as drawing on the intense saturation of colours found throughout Mexican landscapes and cultures. Her practice focuses on processing and translating emotion through texture, gesture, and colour. Benavides begins each work by mentally composing a colour palette based on an instinctual response to memories and experiences. She then paints intuitively, using colour as a means of connecting with the subconscious and spirituality. Benavides utilises varied media such as marble powder, sand, oil, and pastel in order to achieve a material richness across her work, painting onto canvas primed with transparent gesso in order to preserve its rawness. Textural surfaces invite sensorial engagement through haptic complexity.

Engaging in a physical dance with the canvas as she works, Benavides uses a somatic process that she sees as an attempt to unlock the body from traditional gendered roles and societal constraints. Her gestural works suggest explosions of energy, evoking notions of liberty and the release gained by revisiting nuanced emotions and memories. Her fluid practice flows from one canvas to the next, as she continually feeds her work through lived experiences, connections, and bodily presence.

Where Benavides begins with a colour palette, Su starts by drawing on a mental archive of photographs taken in everyday moments before sketching a human figure in monochrome charcoals. Only then does she start applying colour, using oil paint, water-based inks, and dry

pigments to achieve a variety of finishes. As she paints, the figure becomes blurry, distorted by fragments of other memories. The original image is exploded into a semi-abstracted sensorial dreamscape, as ambiguous narratives emerge through the eddies and swirls of the artist's brush before dissolving again before the viewer's eyes.

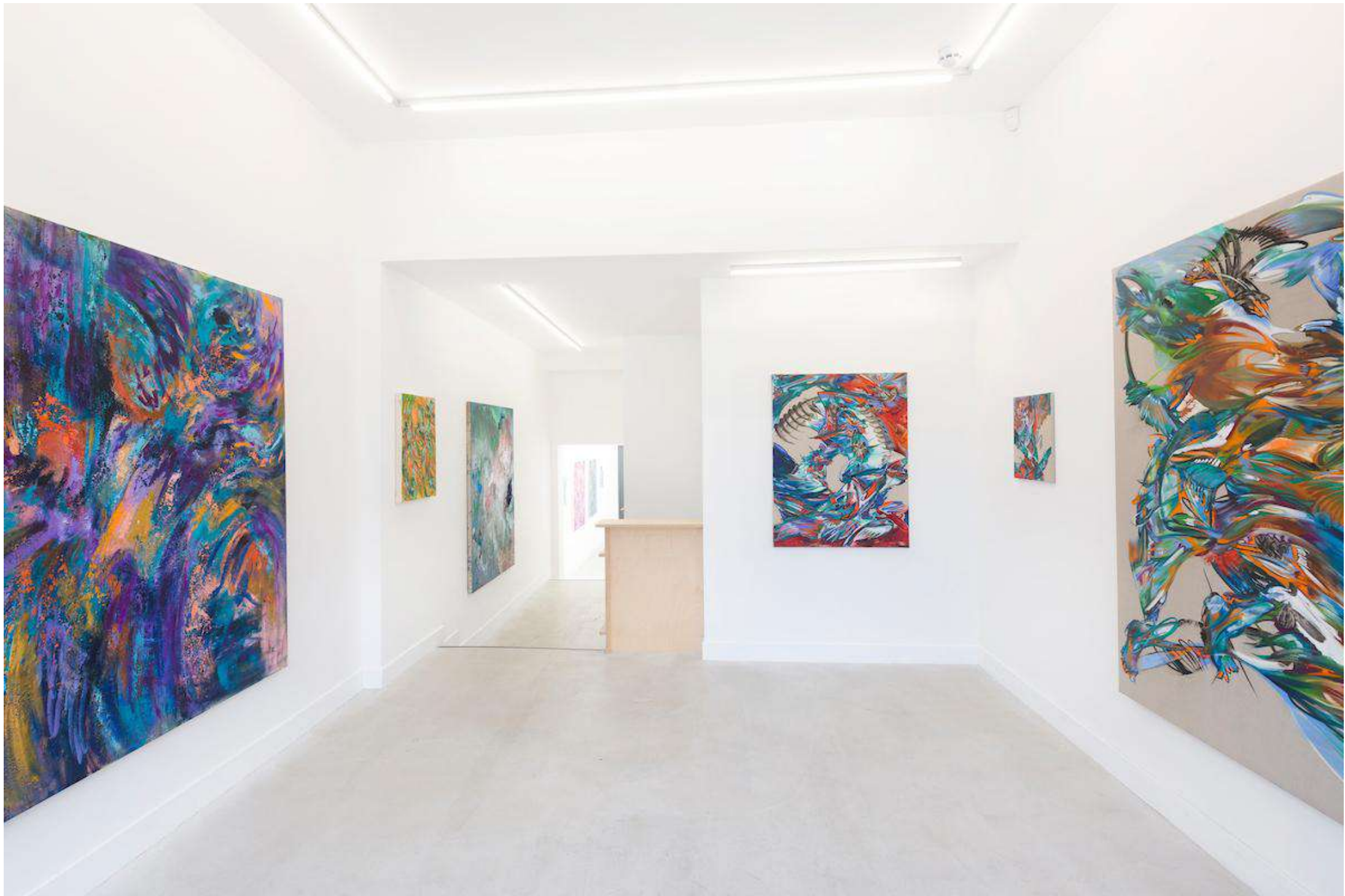
Su is interested in how we trace memories and relive past moments, turning remembrances into new possibilities, manipulating recollections of events, or imagining how things could have been. Colour combinations and compositional elements are coded with ways to solve the puzzle of specific memory fragments, guided by the emotions released through the painting process. There is a strain of regret, of paths not travelled, but the paintings simultaneously evoke a hopeful blossoming in new directions.

Many of the works are concerned with relationships, reflecting on how we see ourselves in relation to others and on the never-ending conflict between ourselves and the versions of ourselves we play out when we are with others. Su sees each canvas as a stage upon which the painted elements are rehearsing, where memory fragments appear and disappear according to mysterious cues. The paintings play out scenes in which the viewer never has the full story, but in which small elements come together to form an absorbing narrative with its own internal logic.

Despite coming from different backgrounds and traditions, Benavides and Su share a concern with revisiting memories and feelings in order to release them. Throughout the show, viewers are invited to participate in the artists' personal memories, to find points of resonance and to project their own interpretations in return. Although they approach their palettes in different ways, for both artists colour offers a language of connection, interpreting emotion through vivid brushstrokes. Their fluid and intuitive work conveys instantaneity, creating painterly spaces that eschew specificities of time and place. Benavides and Su convey strength through poetic vulnerability, converging on a harmonious note of hopefulness and self-aware nostalgia.

Text by Anna Souter

WILDER



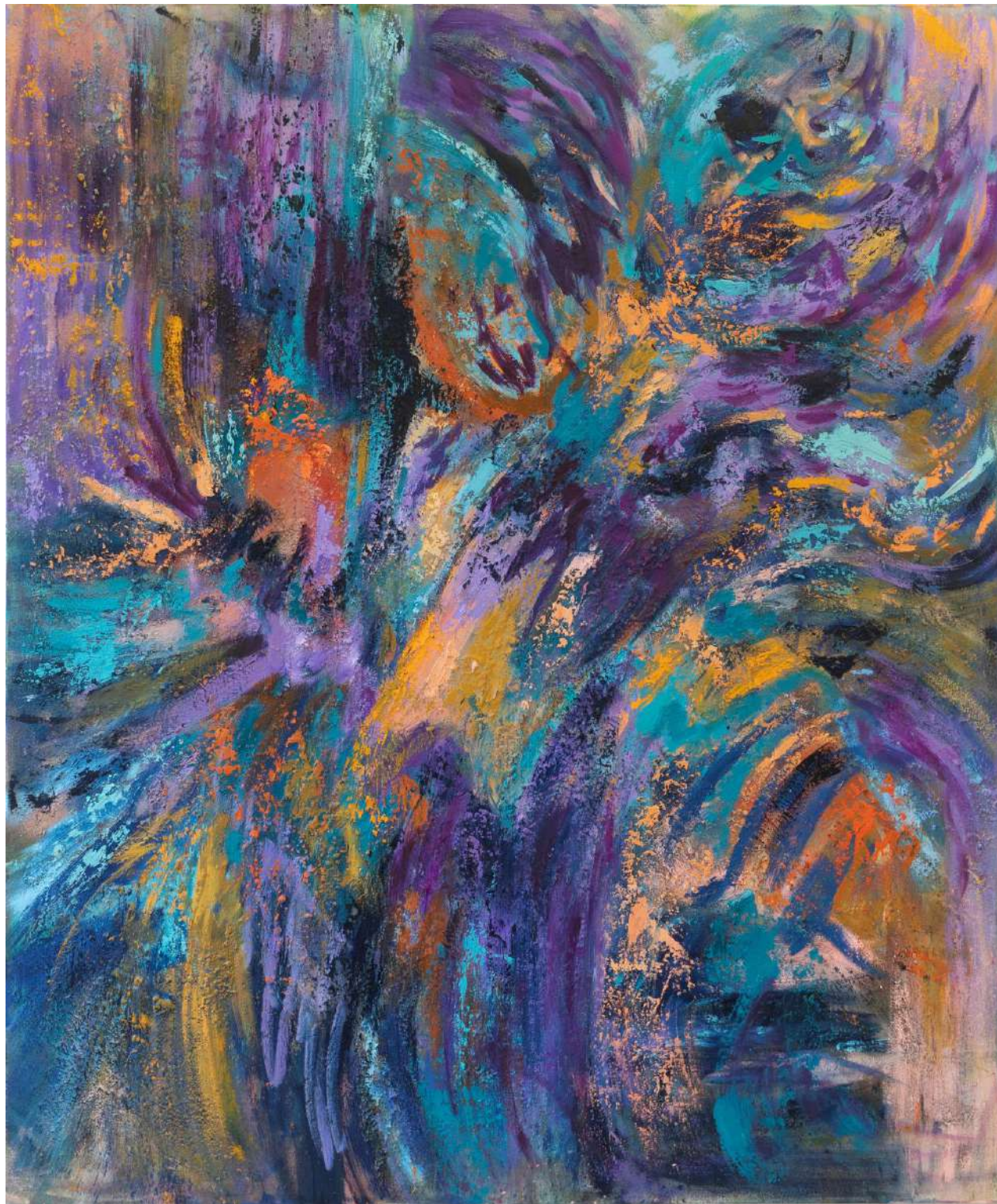
Ana Benavides

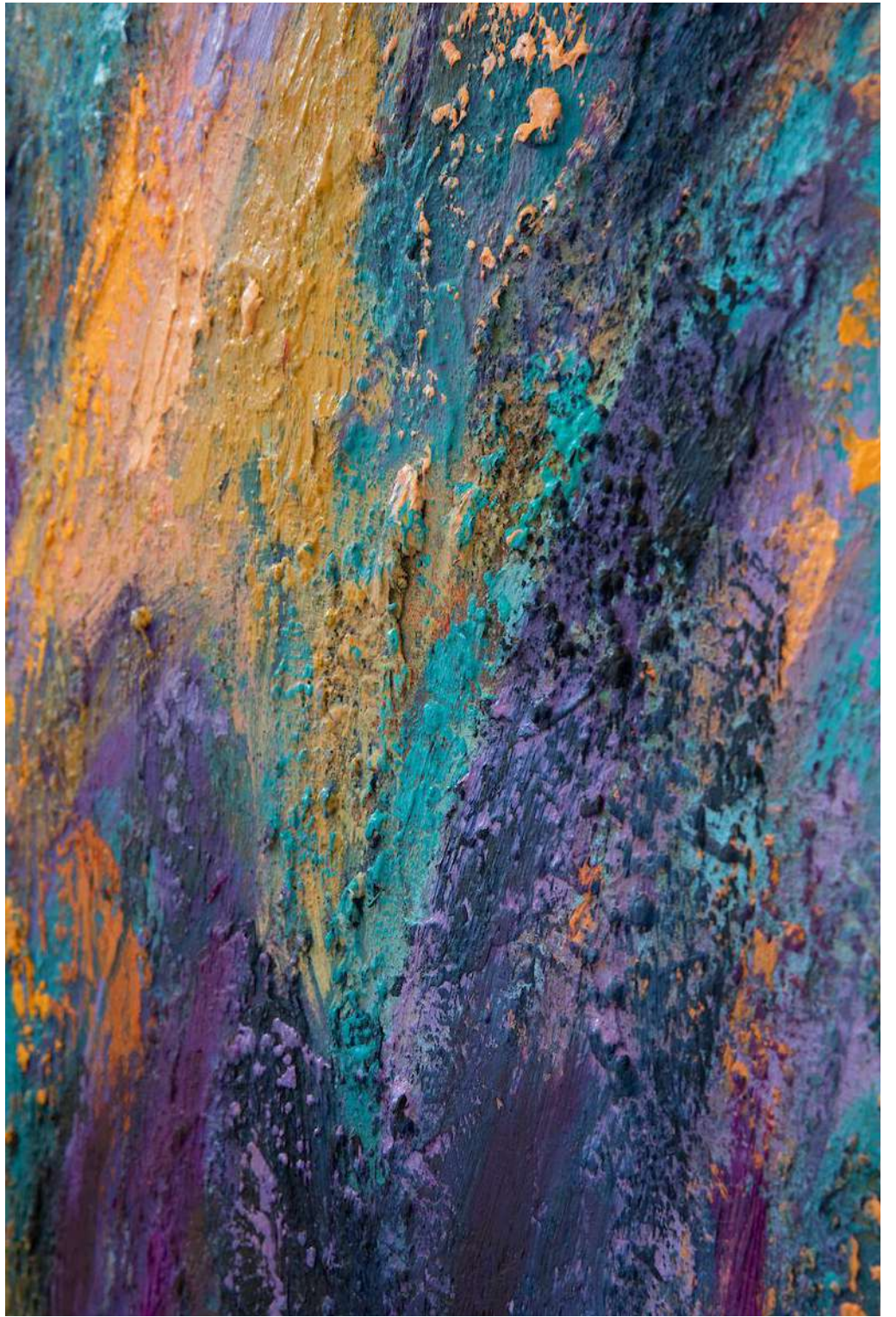
*El Sonido De Las Olas // The
Sound of Waves*

2024

180 x 150 cm

Oil, marble powder, oil pastels
and wax on canvas









Ana Benavides

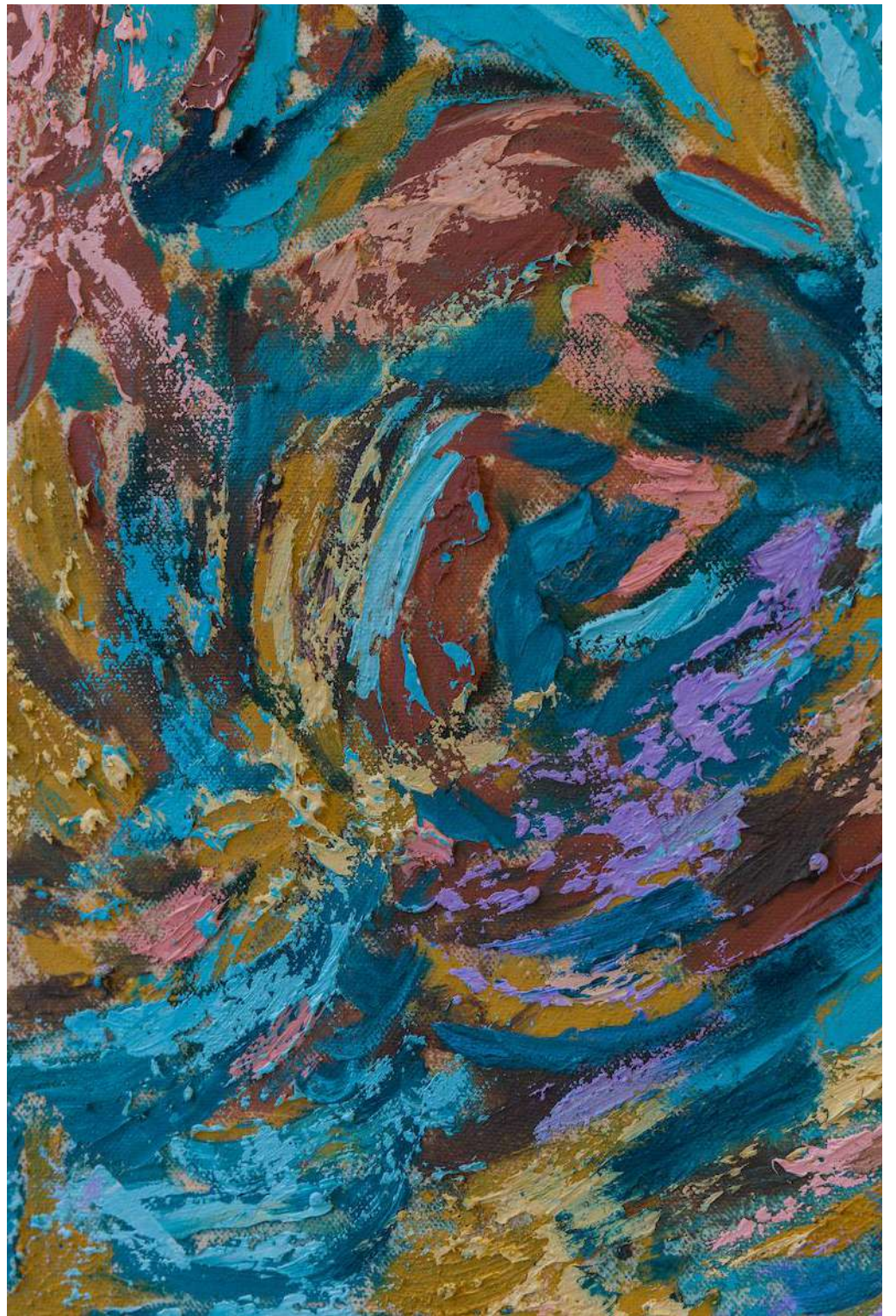
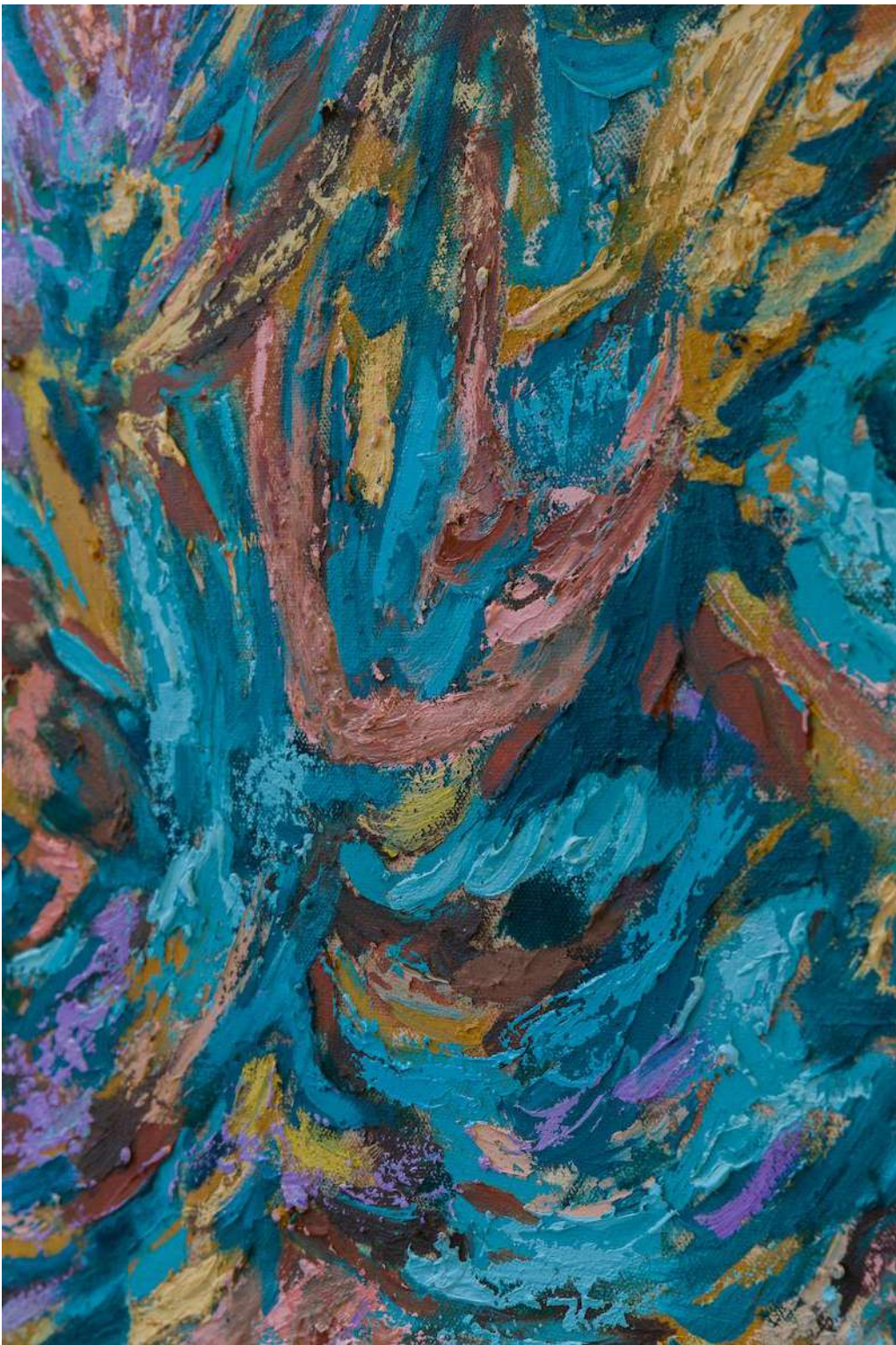
Abode

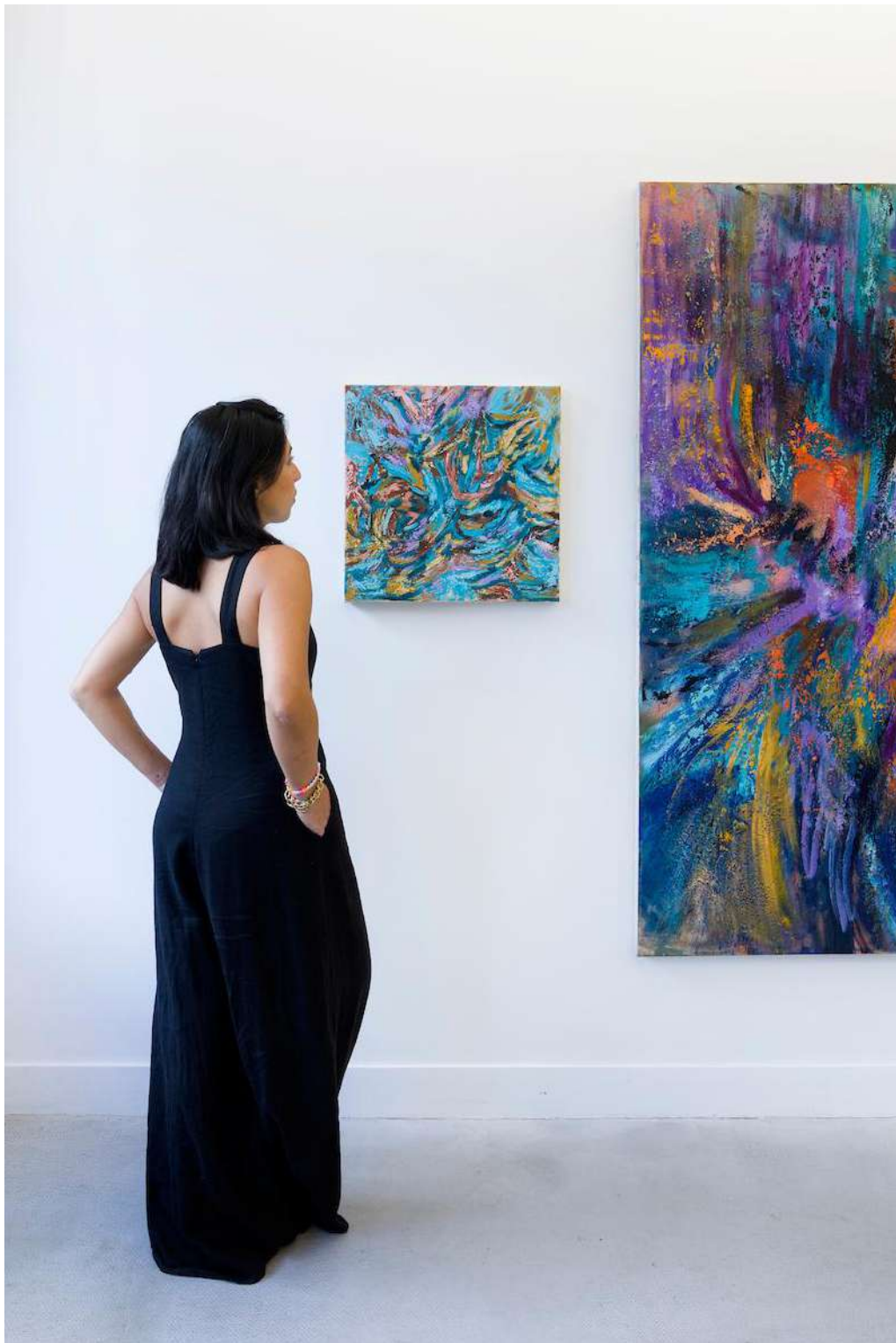
2024

50 x 50 cm

Oil and wax on canvas









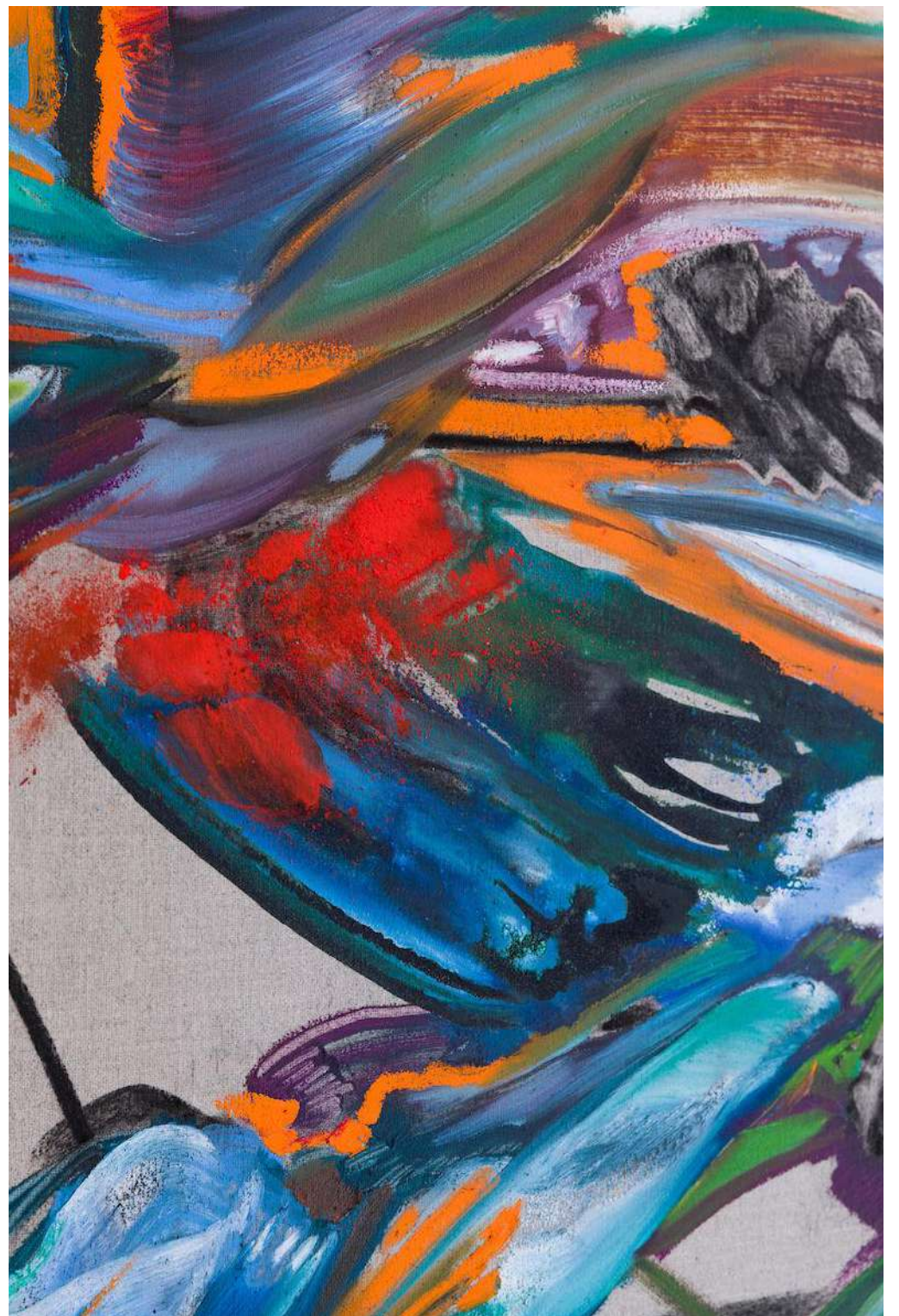
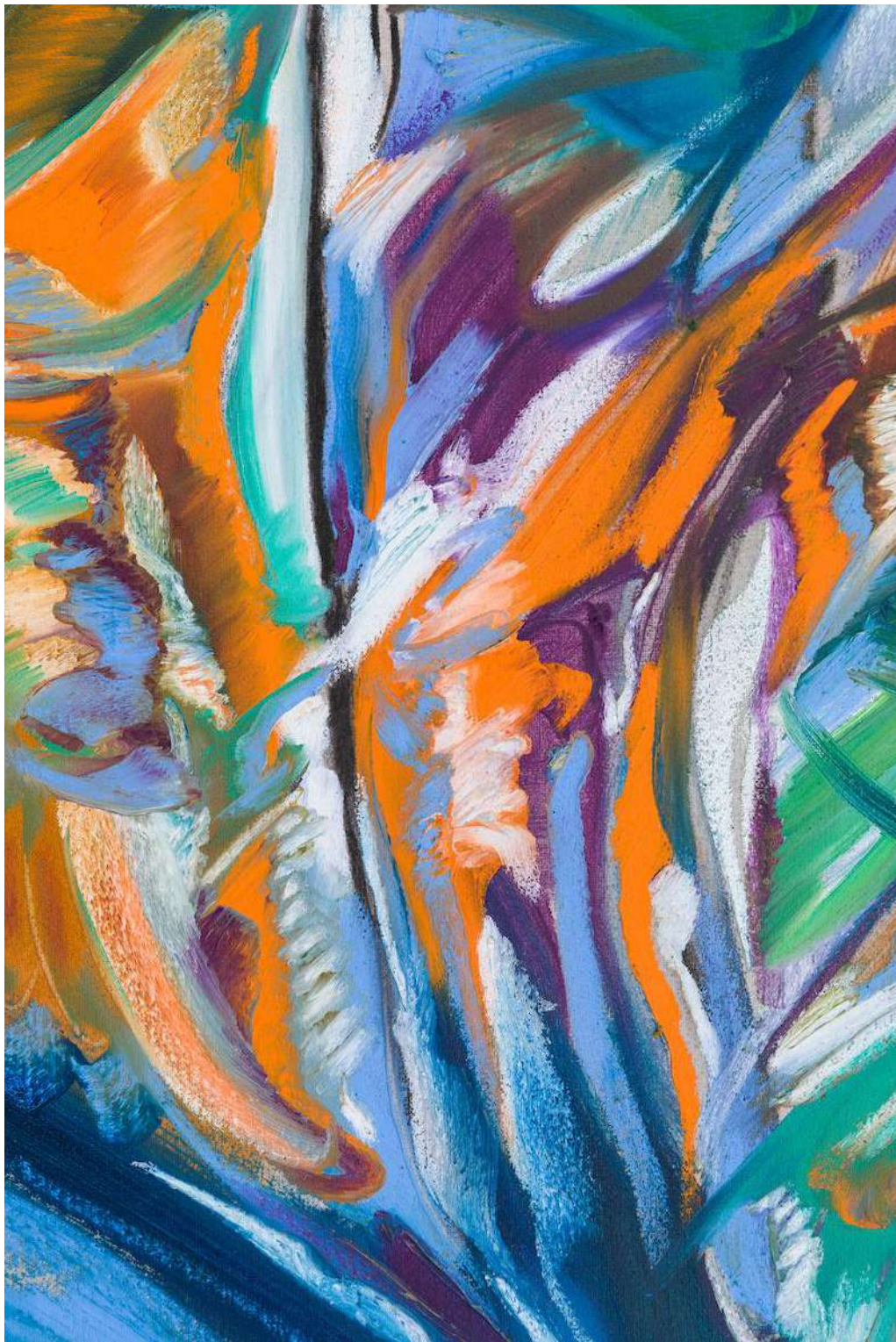
Katherine Qiyu Su

*Places I Wasn't Looking in the
Long Dream*

2024

180 x 150 cm

Oil, charcoal, ink on linen



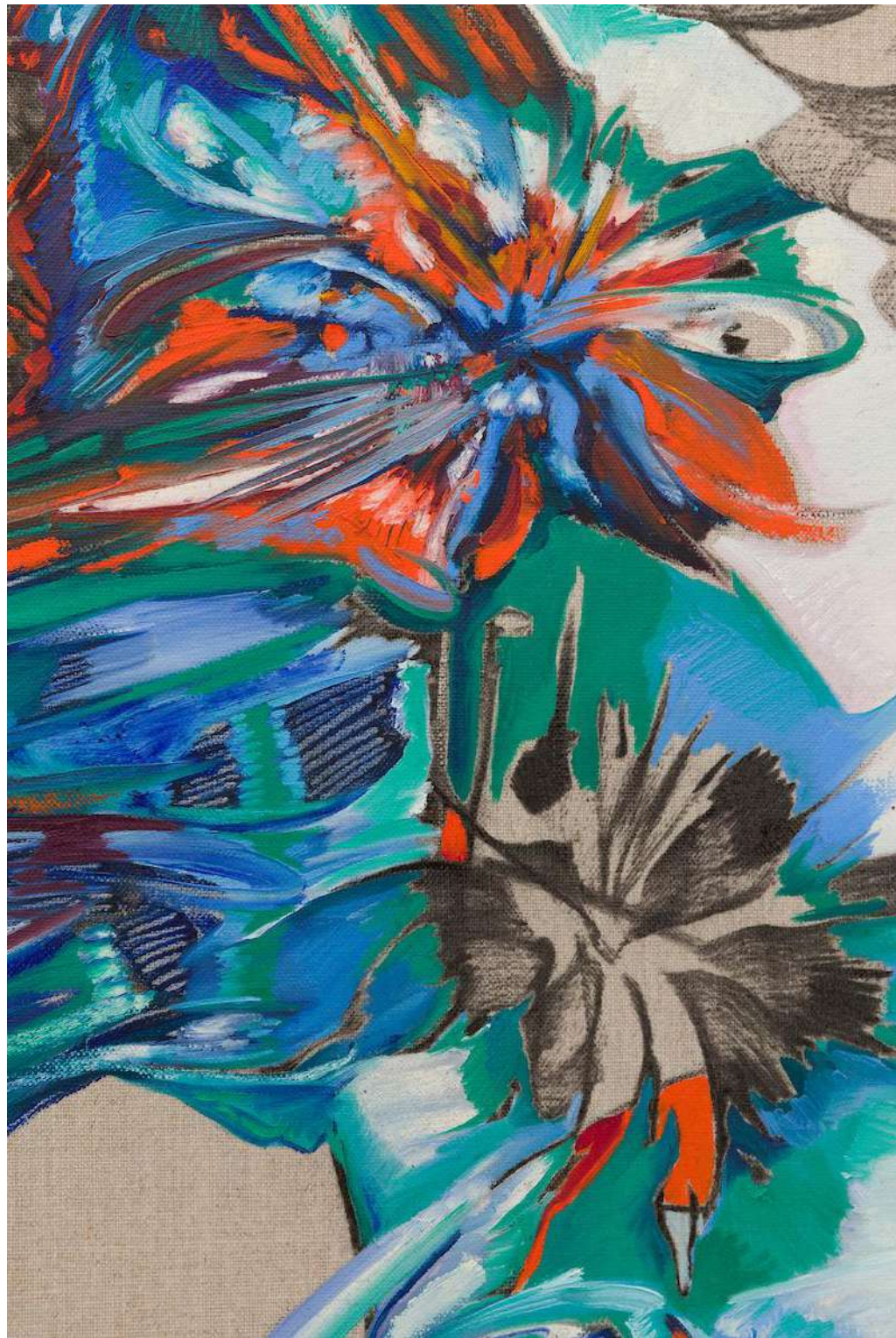
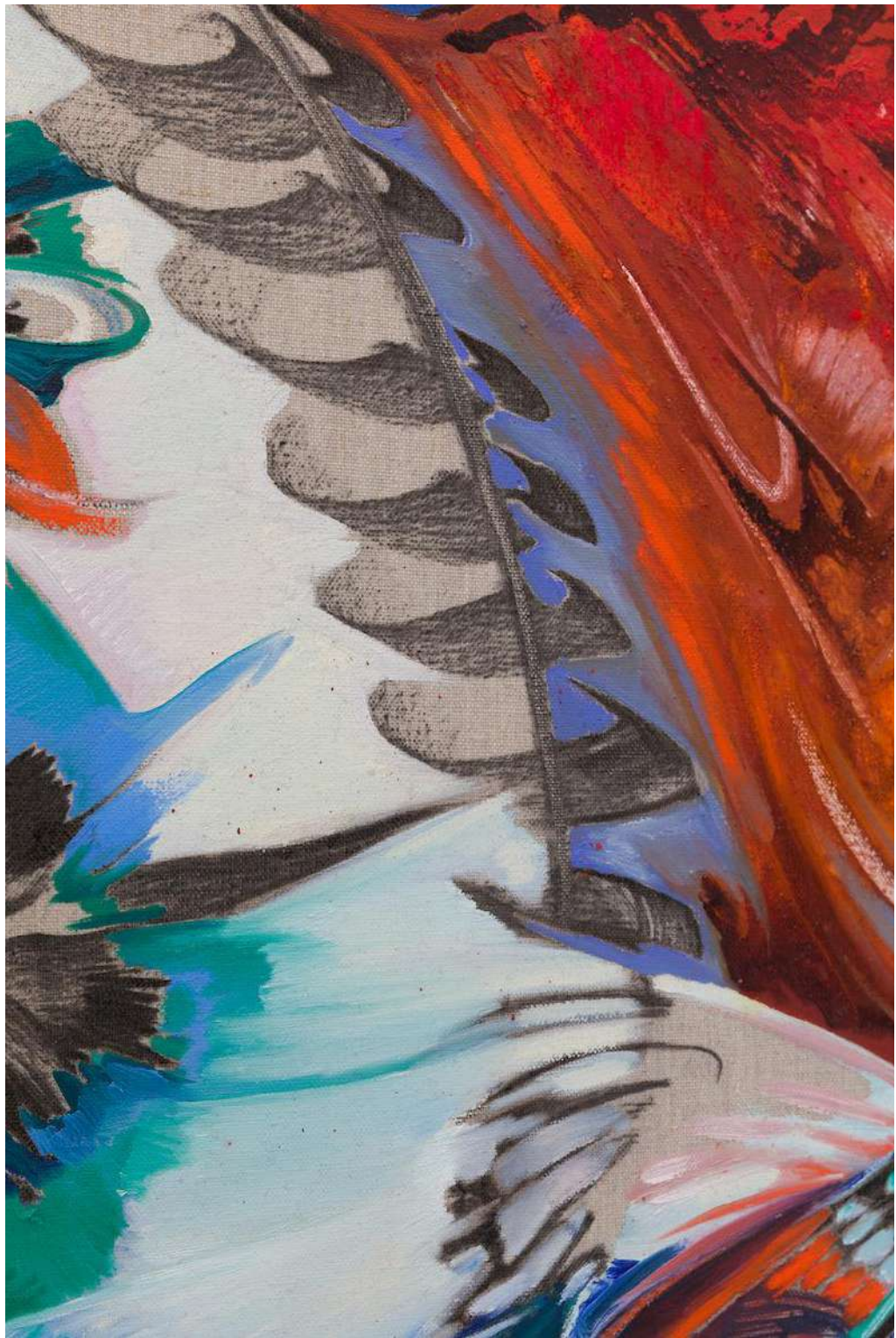


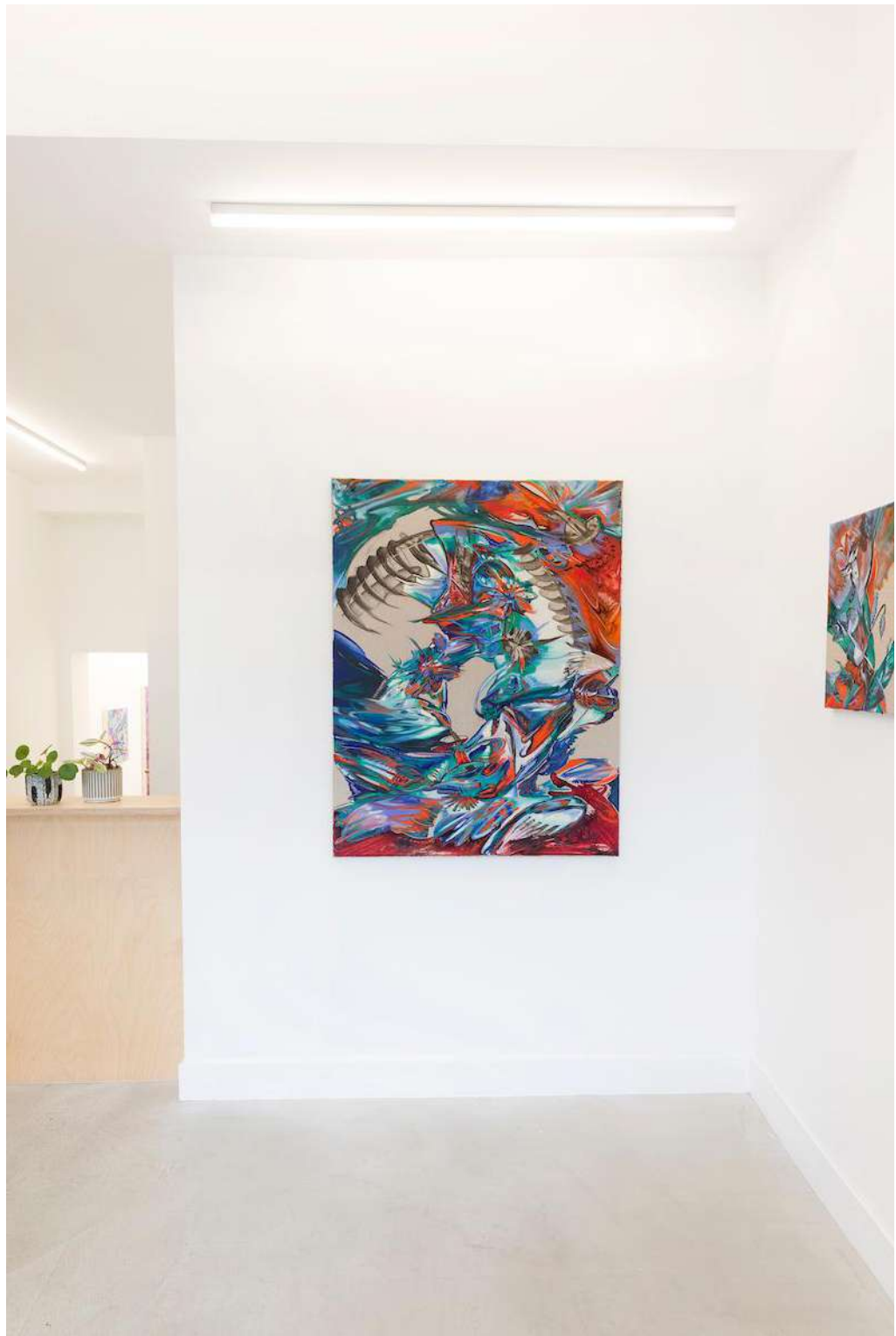




Katherine Qiyu Su

Dragon's Back/Longji
2024
116 x 89 cm
Oil, charcoal, ink on linen









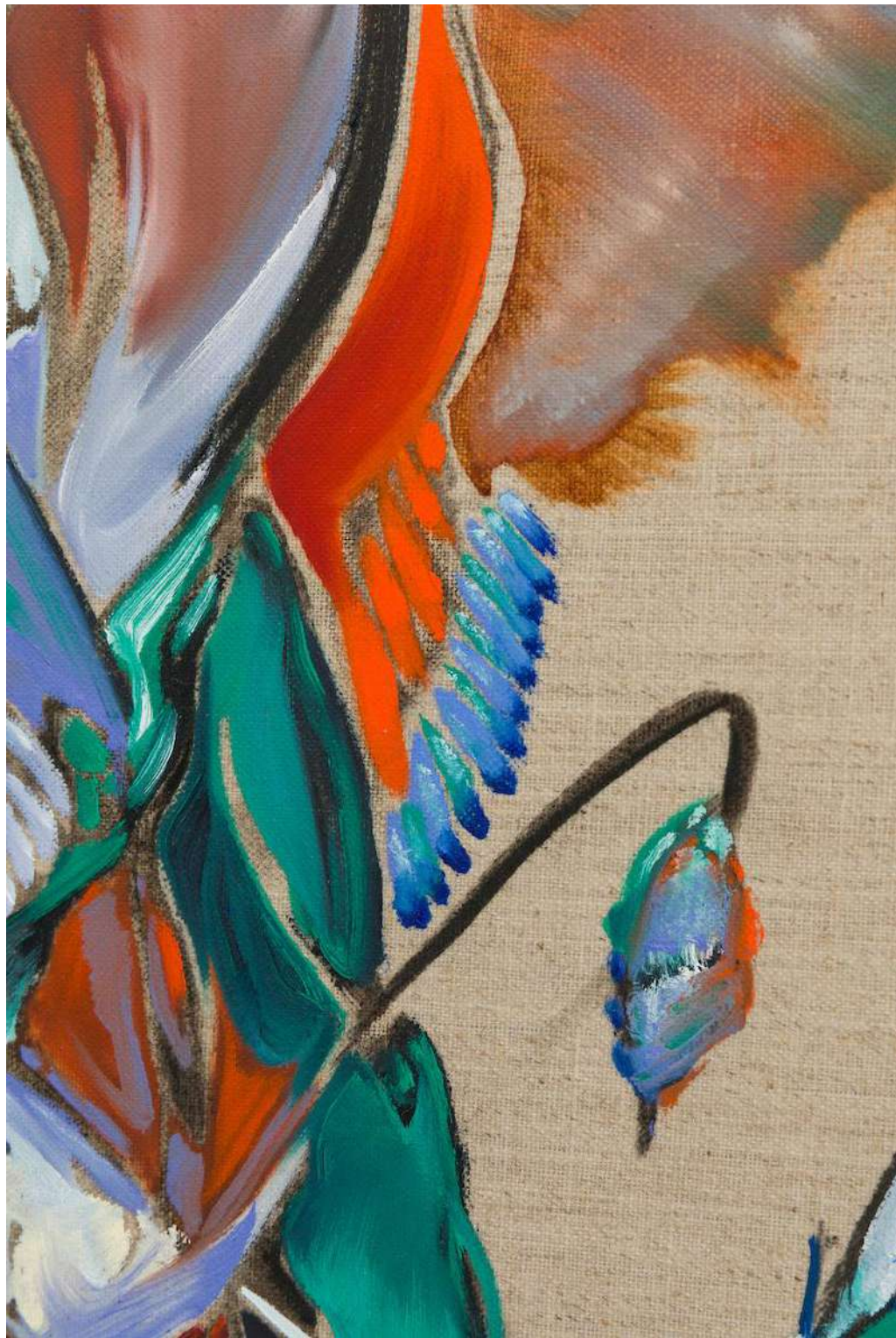
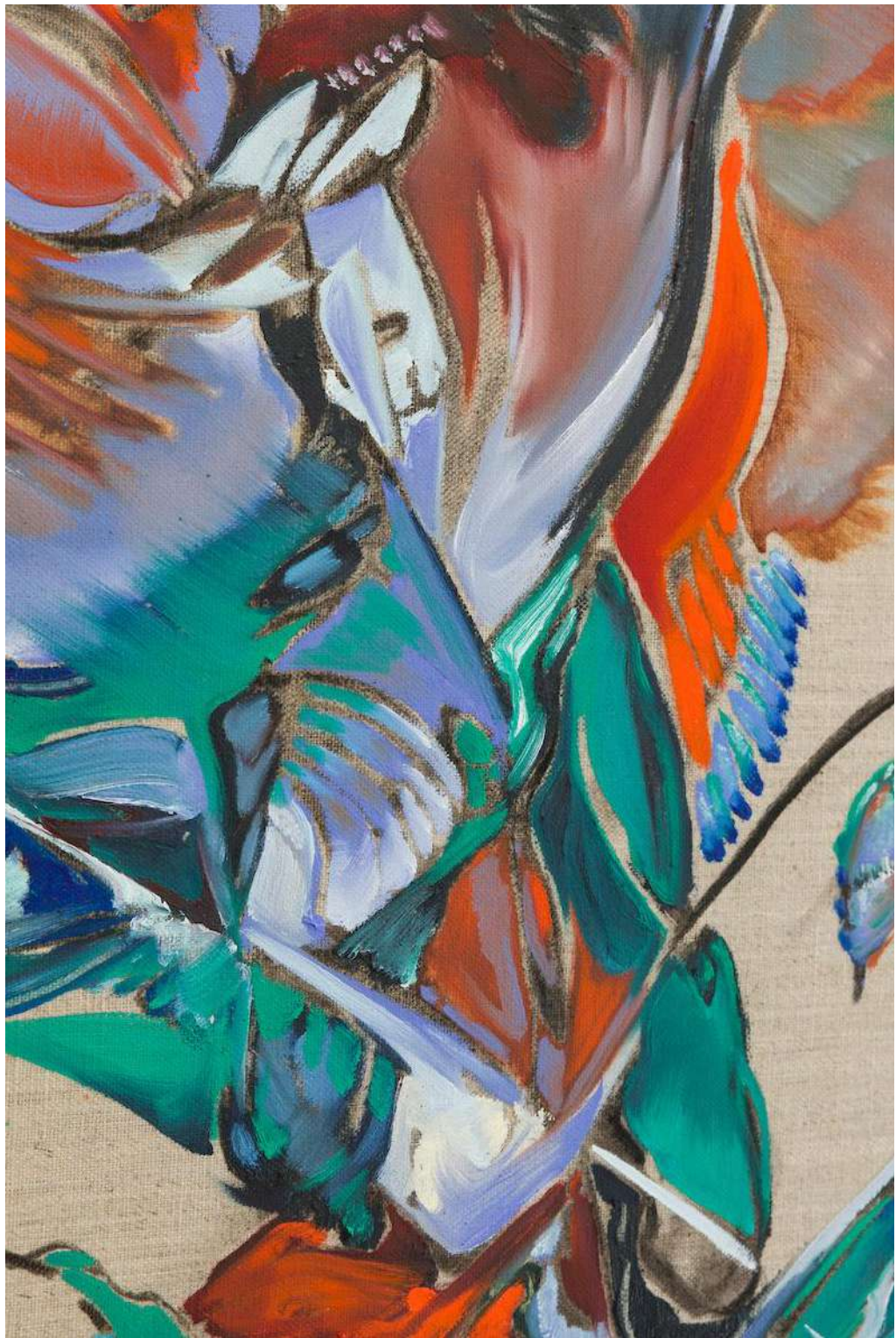
Katherine Qiyu Su

*In the Eye of the Hurricane of
Desire*

2024

45 x 35 cm

Oil, charcoal, ink on linen





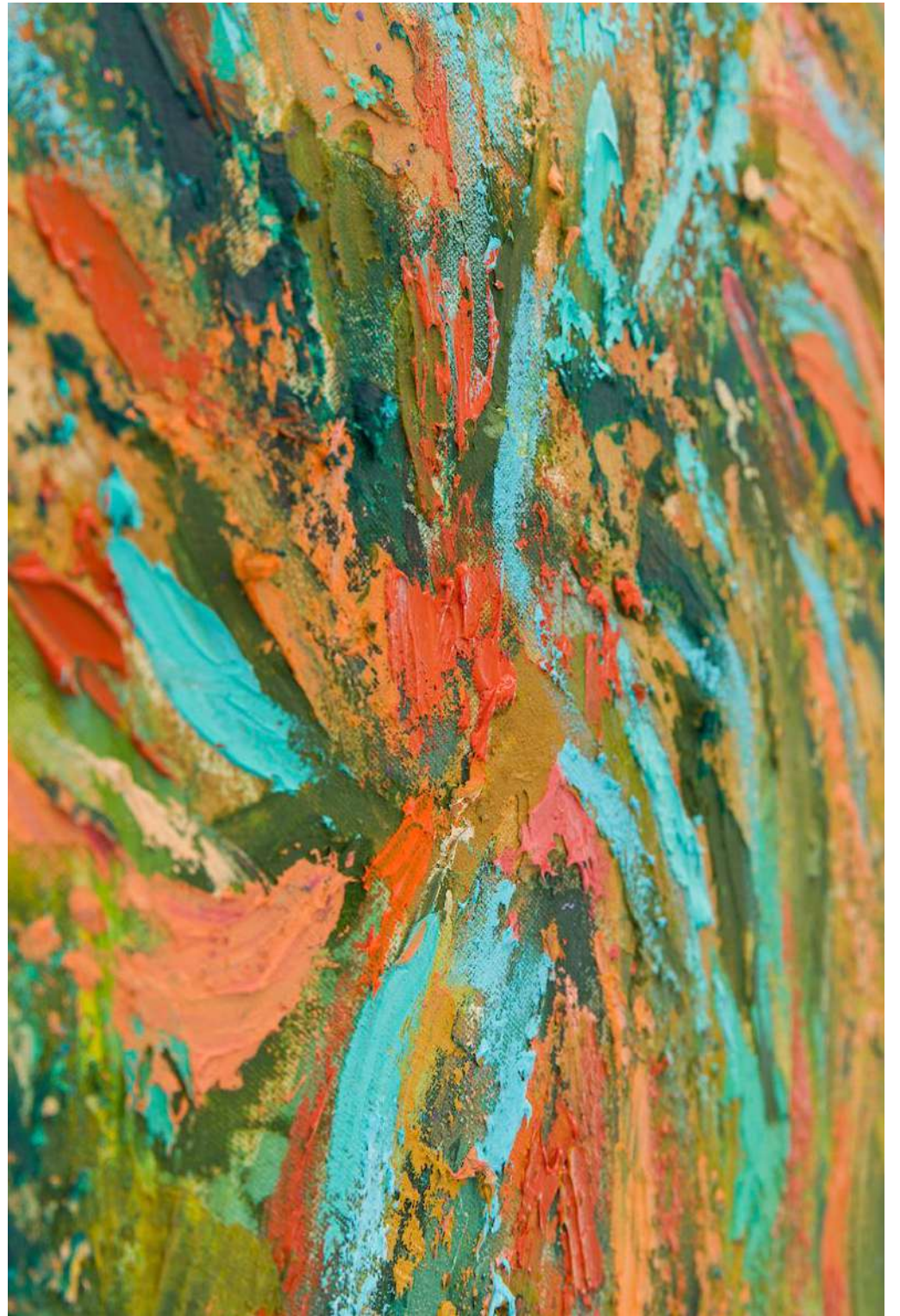
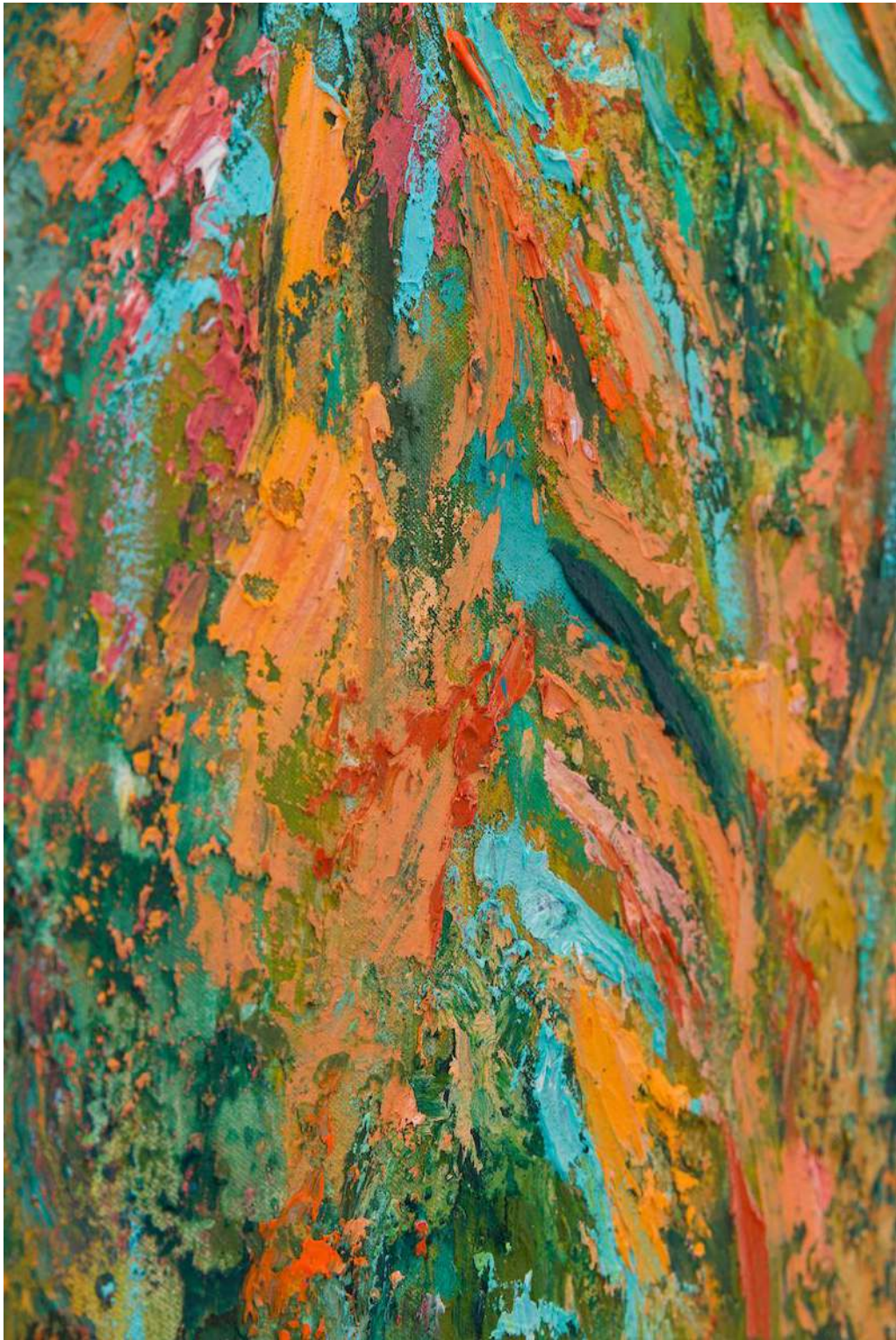
Ana Benavides

Regreso A Casa // Homecoming
2024

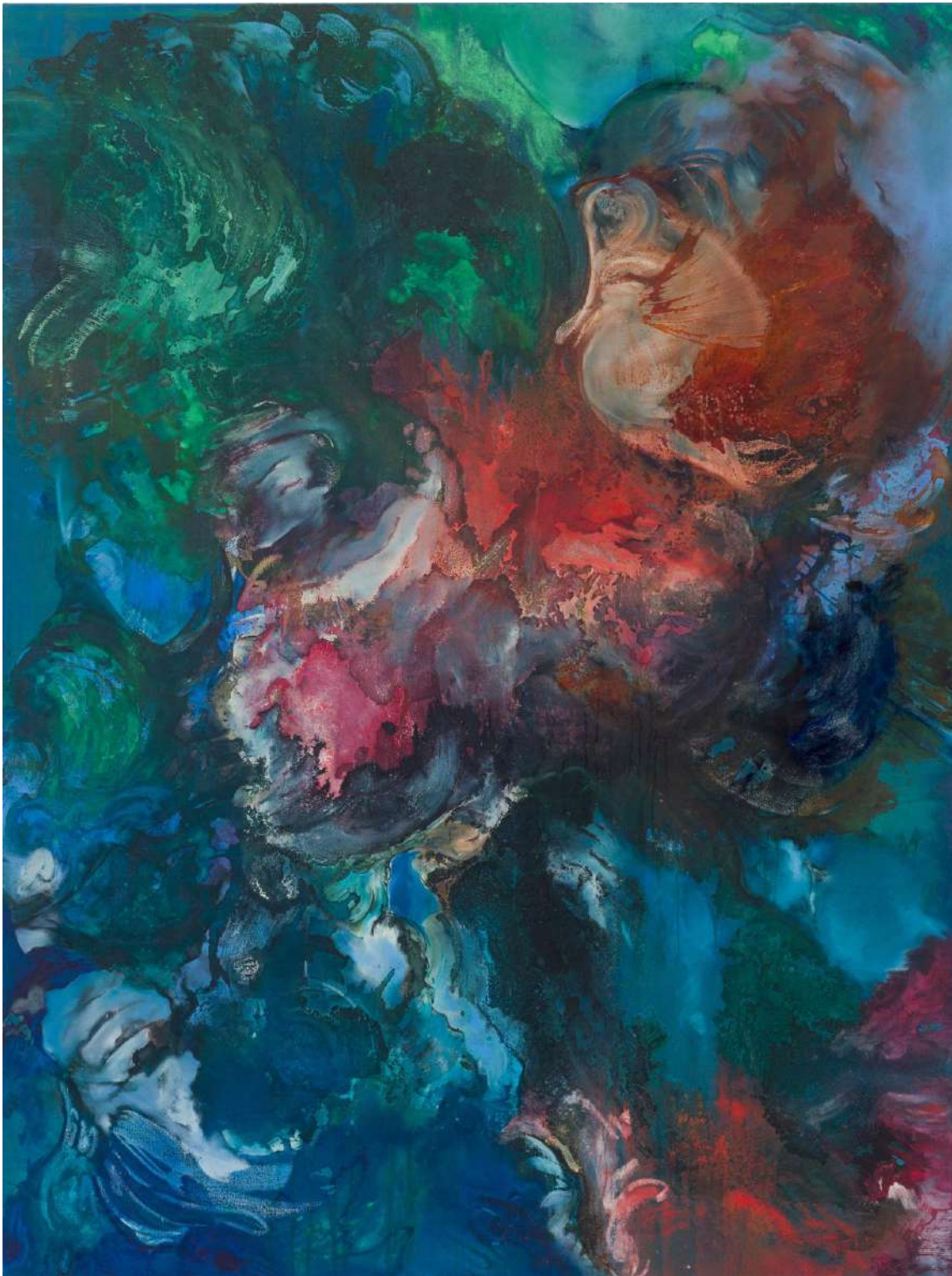
50 x 70 cm

Oil, marble powder,
oil pastels
and wax on canvas



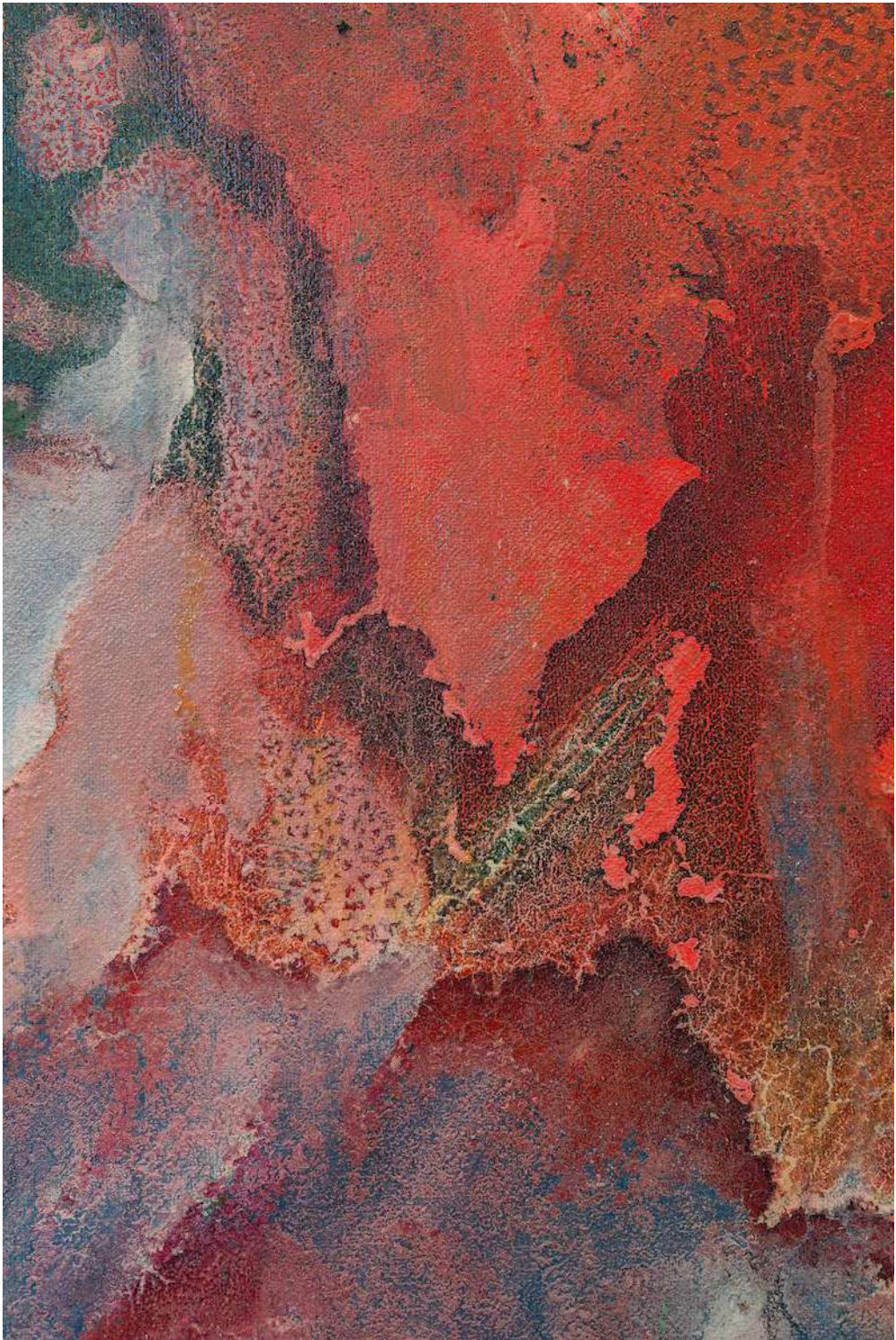
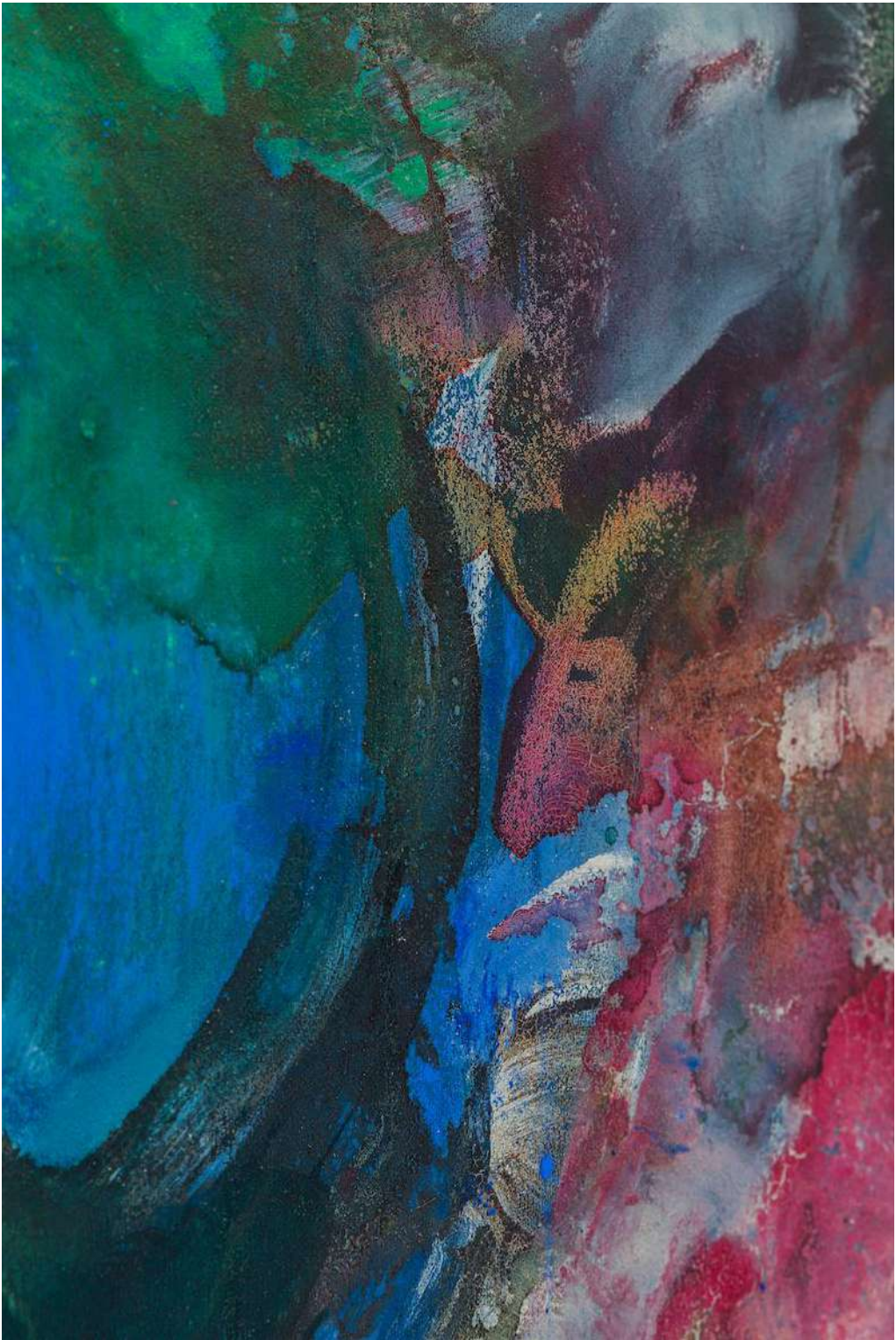




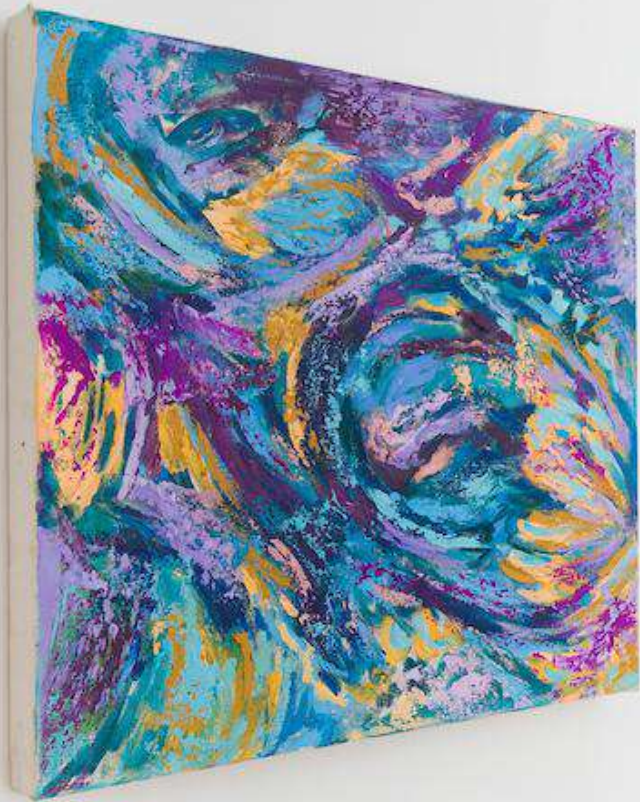


Katherine Qiyu Su

*One Hundred and Twenty
Seconds
2024
160 x 120 cm
Oil, charcoal, ink on linen*



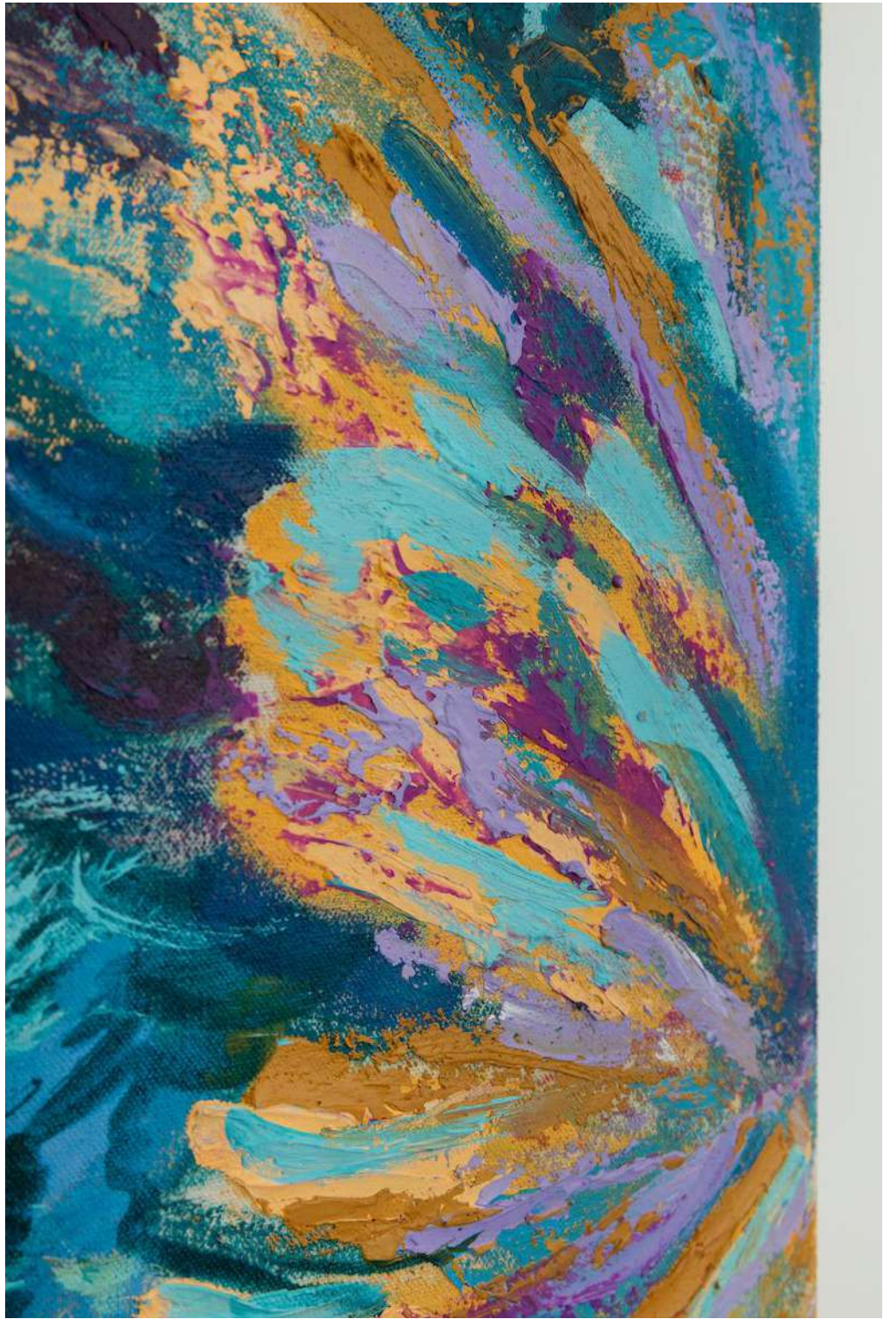




Ana Benavides

Distancia // Distance
2024
50 x 50 cm
oil and wax on canvas





Ana Benavides

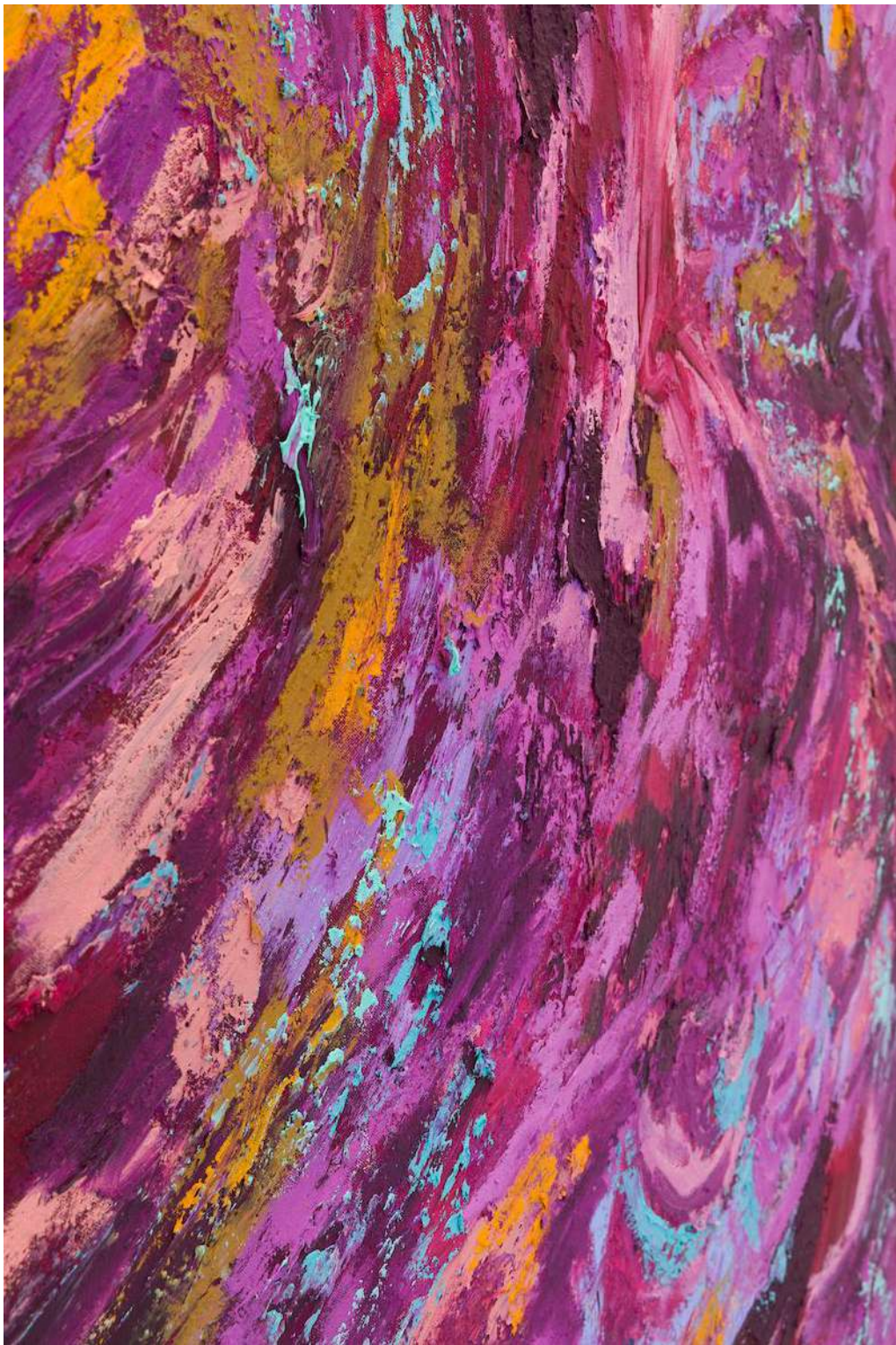
Sueños Lúcidos // Lucid Dreams

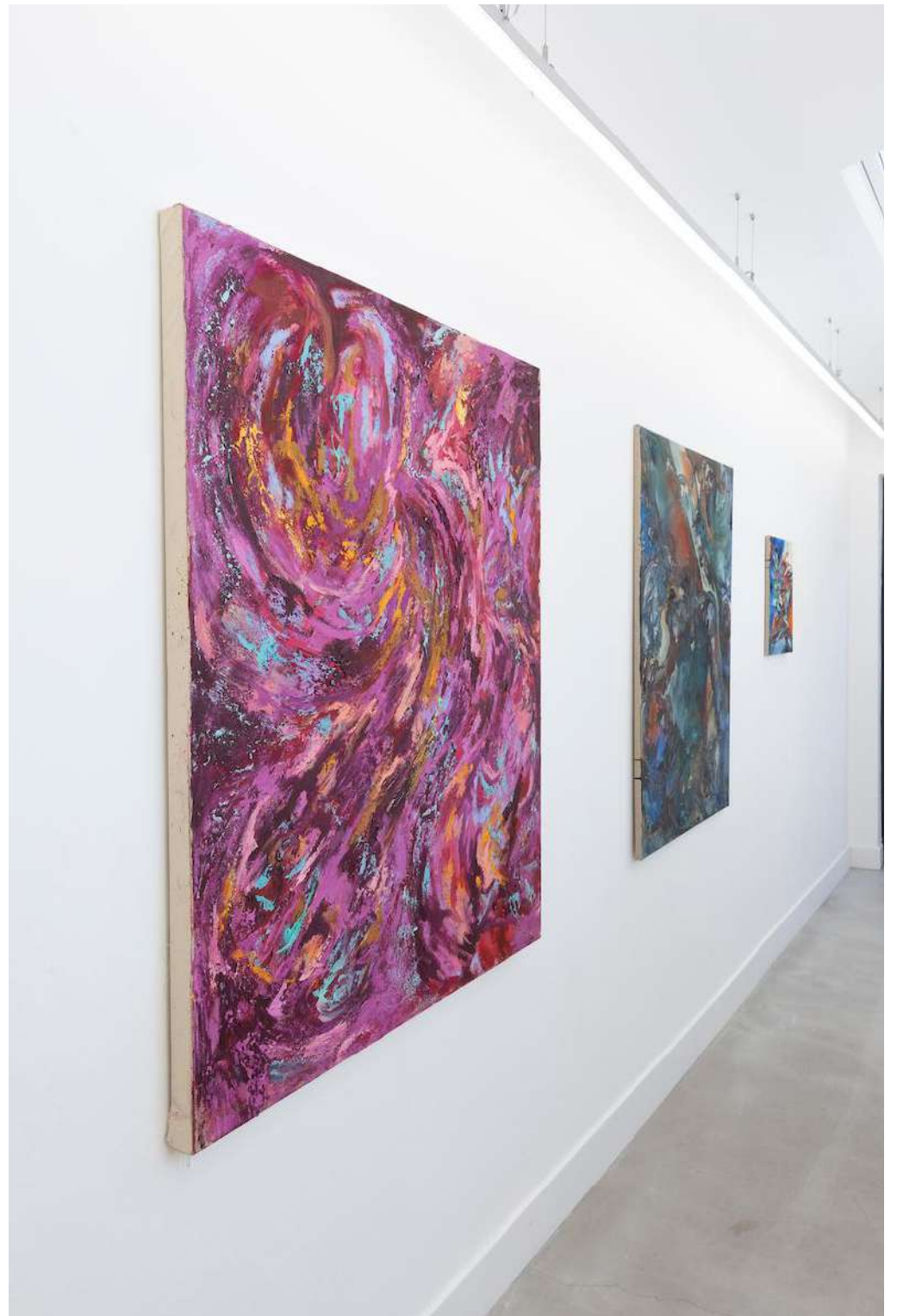
2024

120x100 cm

Oil, marble powder, oil pastels
and wax on canvas









Katherine Qiyu Su

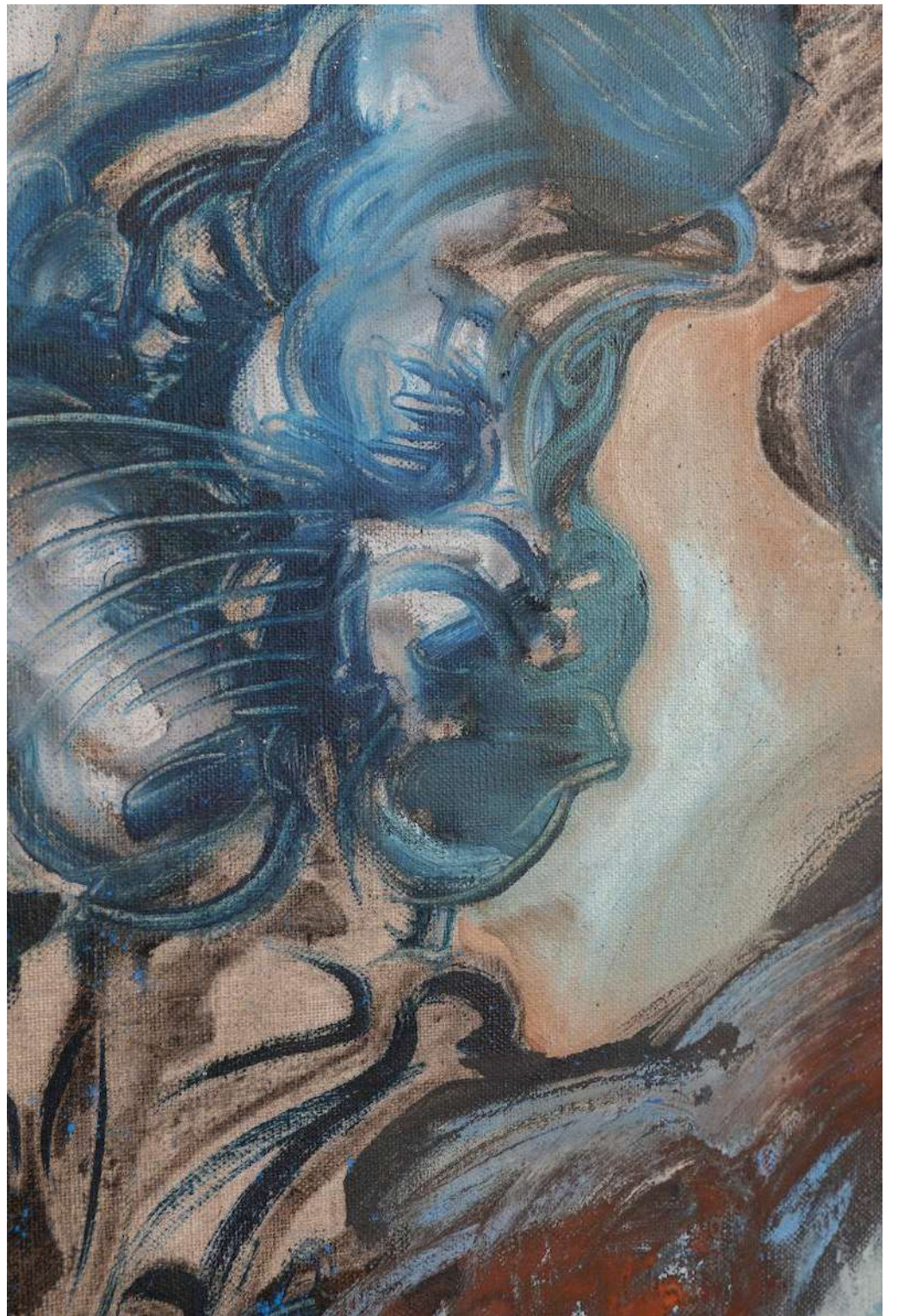
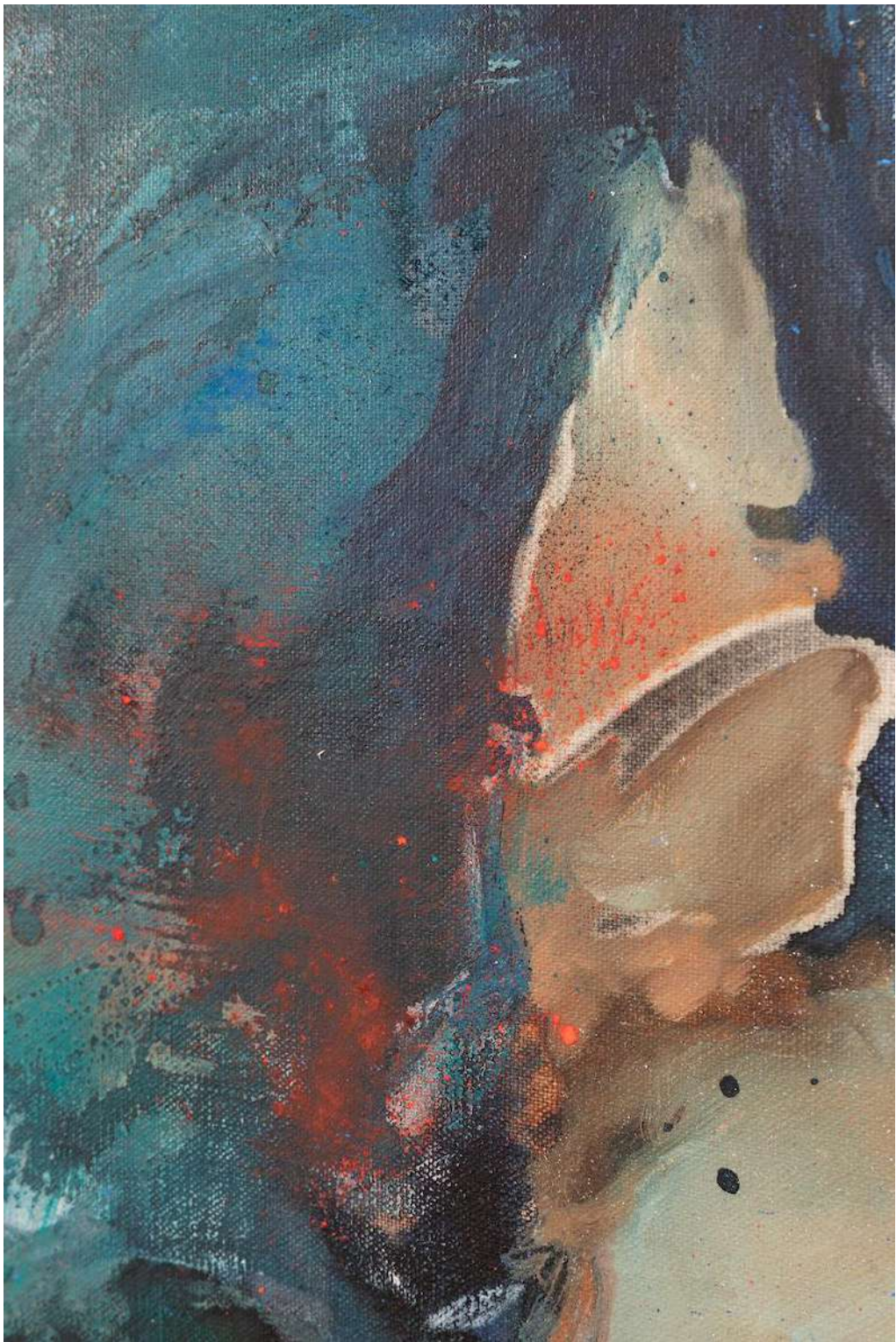
If The Moon Is Bright Enough, I

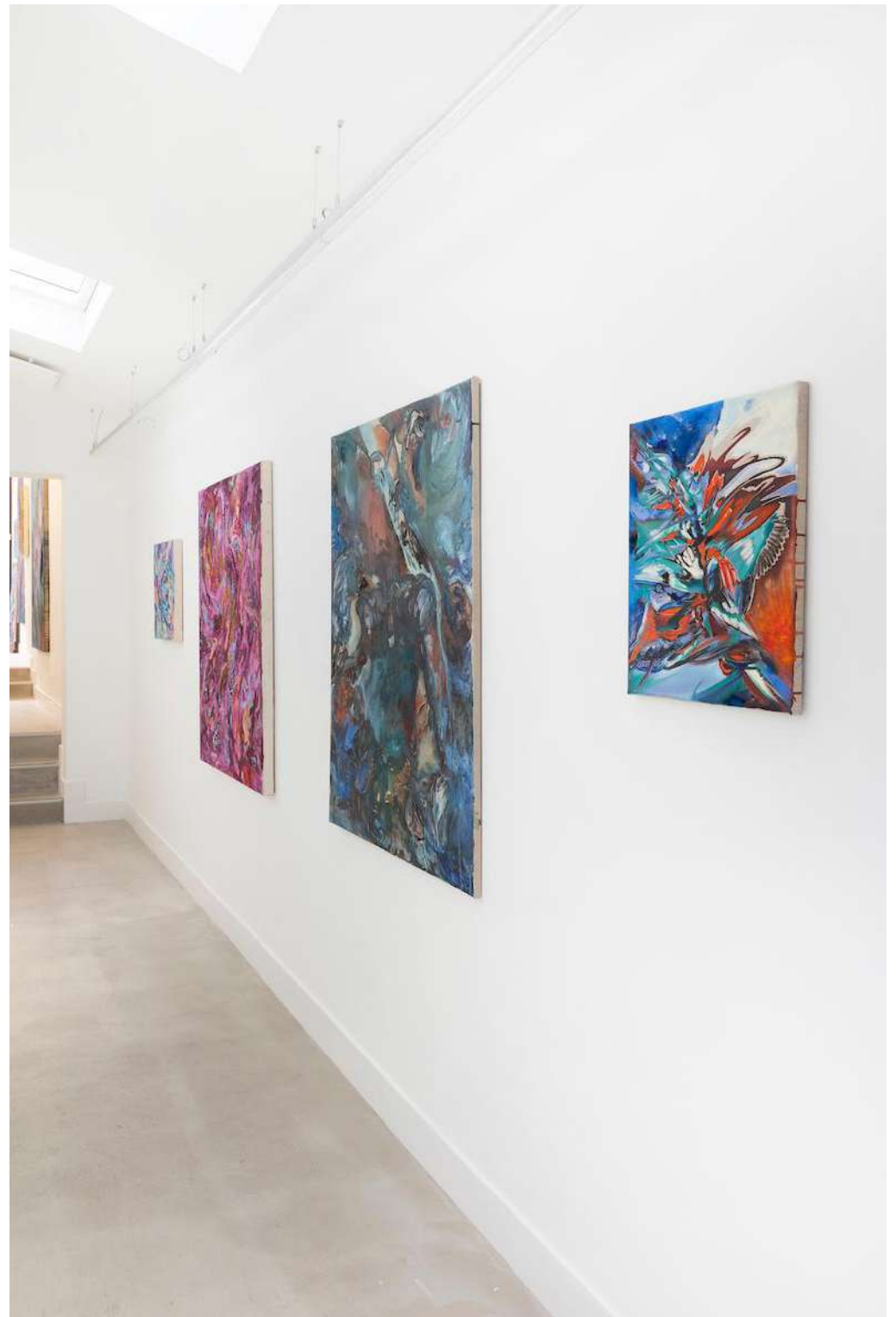
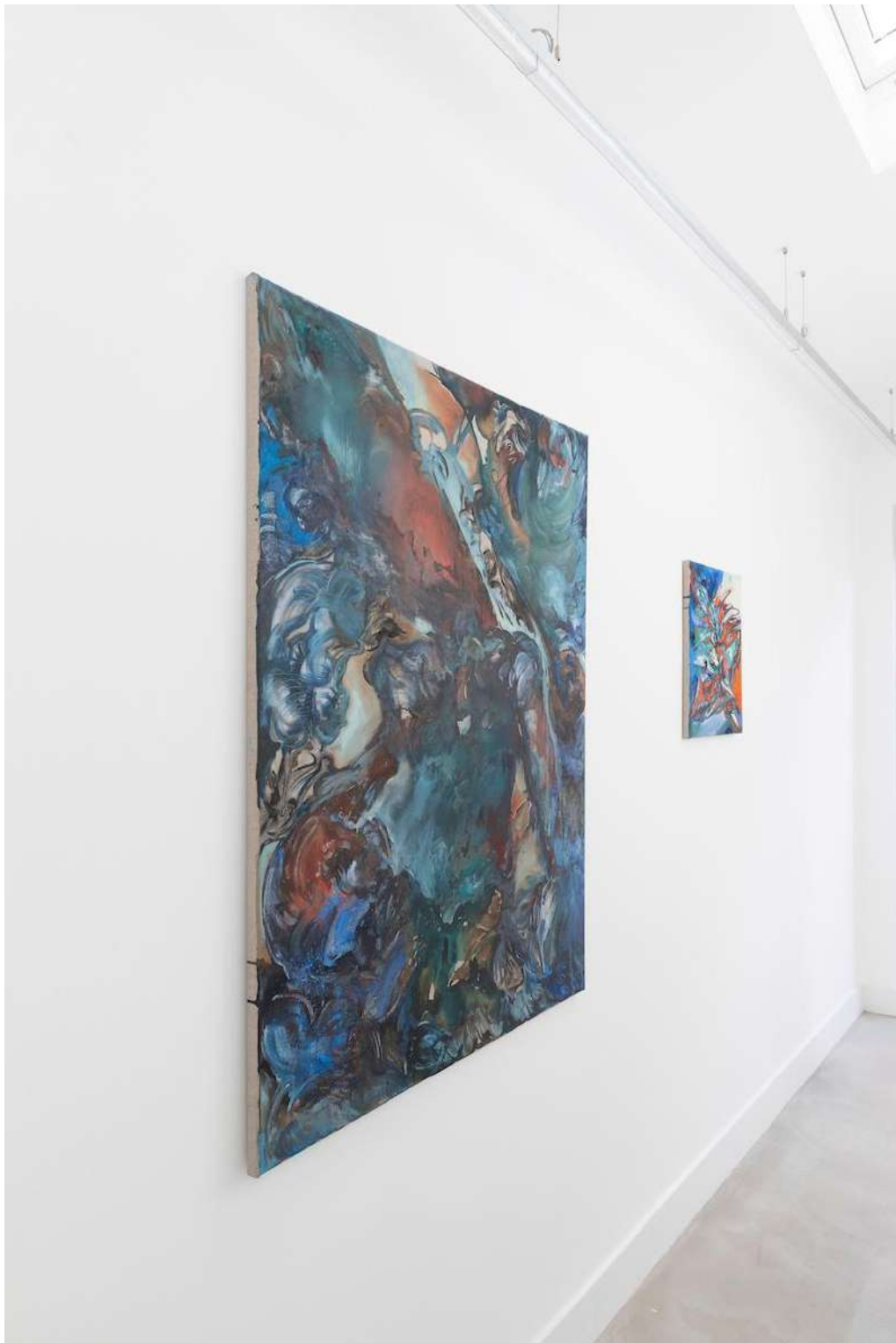
Wish All Of it Shines On You

2024

116 x 89 cm

Oil, charcoal, ink on linen







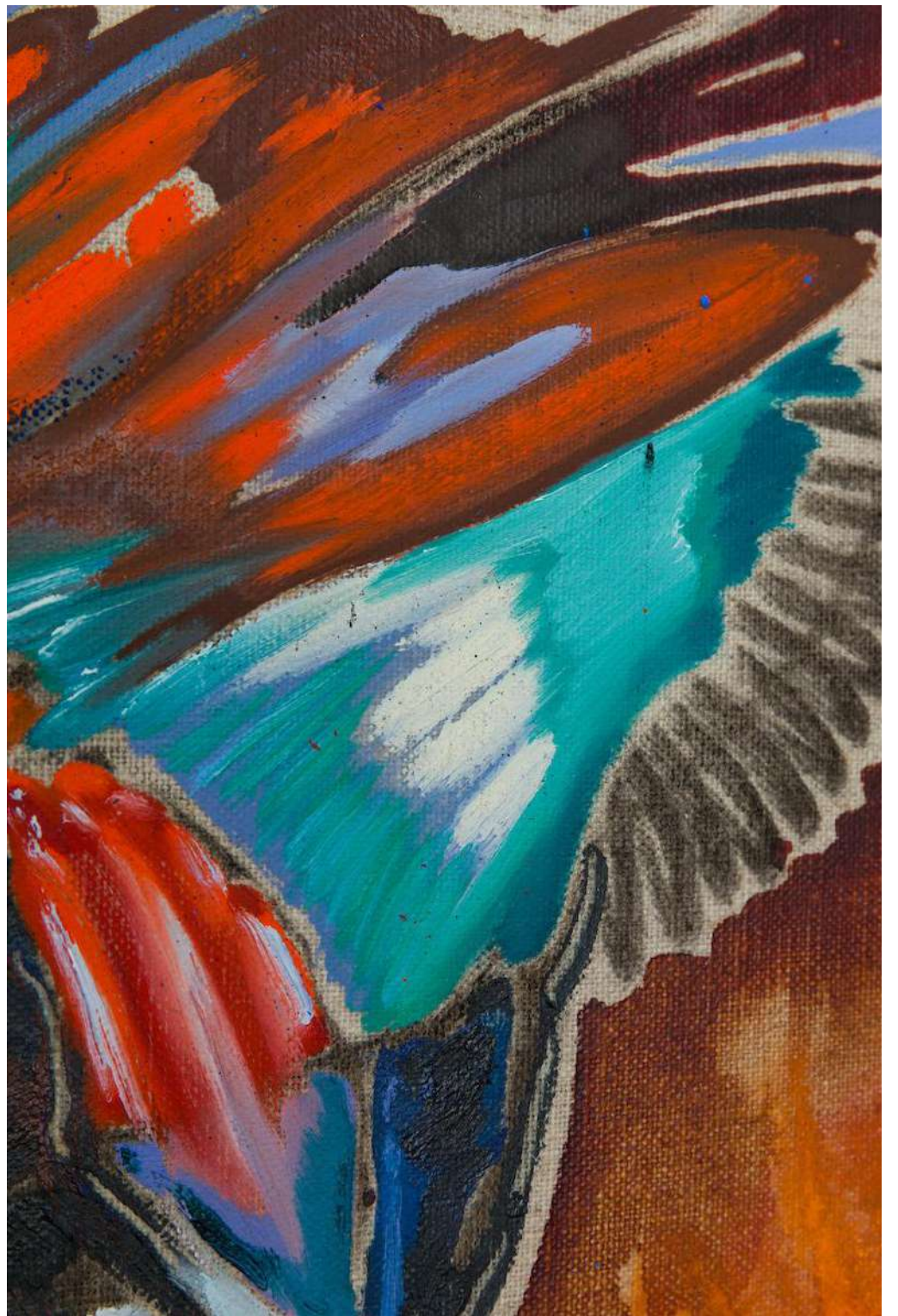
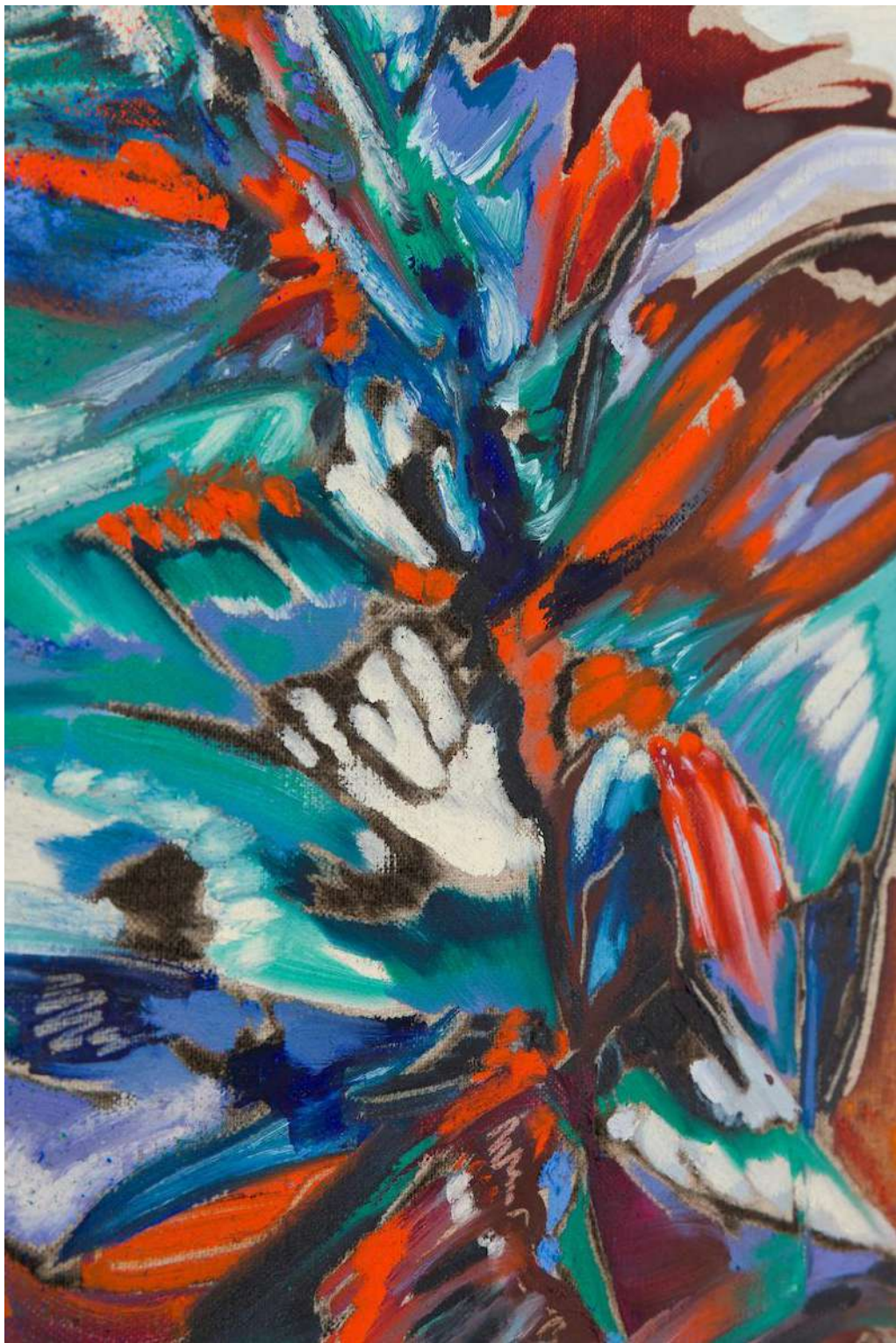
Katherine Qiyu Su

*Chamomile Splash Cast The
Shadow*

2024

45 x 35 cm

Oil, charcoal, ink on linen



Katherine Qiyu Su (b. 1999 in Beijing, China) lives and works in London. Katherine recently completed an MA in Painting at the Royal College of Art in London (2023) Her work has been exhibited at Thom Oosterhof Project, London (2023), St. Art Gallery, London (2023), Plain Gallery, Milan (2023), Candid House Projects, London (2023), Studio West Gallery, London (2023), Alessandro Albanese Gallery, Milan (2024), Ojiri Gallery, London (2024), and Half Gallery, New York (2024).



Education

Royal College of Art

September 2022 – August 2023

• *Painting (MA)*

North China University of Technology

September 2017 – June 2021

• *Interior Design (BA)*

Solo Exhibitions

Edge Art Space Gallery, 'Summer Phantoms of Desire', Turino, Italy 2024

Selected Group Exhibitions

2024

D Contemporary Gallery, 'The Butterfly Effect, Vol II', London, UK 2024

Alessandro Albanese Gallery, 'Of Freedom of Pleasure', Milano, Italy 2024

Studio West Gallery, 'MEGA Art Fair', Milano, Italy 2024

Ojiri Gallery, 'Tear Rubber', London, UK 2024

Half Gallery, 'How Far is the Foreign Lands', New York, US 2024

2023

Royal College of Art, Degree show, London, UK 2023

Thom Oosterhof Project, 'I paint outside the lines', London, UK 2023

ST.Art Gallery, 'Momentary Bond', London, UK 2023

Plain Gallery, 'Awareness', Milano, Italy 2023

Studio West Gallery, 'Now Introducing', London, UK 2023

Ana Benavides (b. 1996 Monterrey, Mexico) lives and works in London. Ana recently completed an MA in Painting at the Royal College of Art in London (2023). Recent exhibitions include *Tear Rubber*, Ojiri Gallery, London (2024); *The Dimension of Feeling*, Vortic Gallery, Curated by Maria Korolevskaya, London,(2024); *A Journey Into The Unknown*, Haricot Gallery, London, (2024) and *Why Are We So Afraid Of Feeling?*, Lupo Gallery, curated by Martha Onsola, Milan Italy, (2023).



Credits: @nathanwolfgrace for Artiq

Education

2021-2023 MA Painting, Royal College of Art, London, UK
2018- BA (HONS) Advertising and Marketing Communications, ITESM (Monterrey, Mexico)

Solo Exhibitions

Why Are We So Afraid Of Feeling?, Lupo Gallery, curated by Martha Onsola, Milan Italy, 2023

Selected Group Exhibitions

2024

Artsy Foundations Fair, Wilder Gallery, London, UK
Tear Rubber, Ojiri Gallery, London, UK
The Dimension of Feeling, Vortic Gallery, Curated by Maria Korolevskaya, London, UK
A Journey Into The Unknown, Haricot Gallery, London, UK

2023

You Can't Always Get What You Want, Haricot Gallery, London, UK
How Things Hold, T293 Gallery, Rome Italy.
The Consolation Of Clinamen, Tabula Rasa Gallery, curated by Zhang Jiarong, Beijing China.
Secret Gardens, Wilder Gallery, co-curated by Matilda Liu, London UK.
Cacotopia 07, Annka Kultys Gallery, London UK.
LUMA, Apsara Studio, Aora space, curated by Jenn Cellis, London UK.

2022

WIP RCA, Soho Revue, London.
Art of a Postcard Summer Auction, (Gemma Peppe), London UK.
I Feel Everything All At Once, Natasha Arselan Gallery, London UK.

Partnership Programmes:



Wilder Gallery partners with Own Art, enabling art buyers from the UK to acquire artwork and spread the costs over a 10 month interest free period. Payments are made by direct debit and collectors are able to receive the work immediately (or after the exhibition closes). The first payment is normally paid a few week - a month after the work is delivered. For example, a work priced £1000 equates to 10 monthly interest free payments of £100. This service is provided free and at no additional cost to the collector. If you would like to purchase with Own Art or find out more please email Michelle info@wilder.gallery.

Wilder Gallery, 77 College Road, London NW10 5ES
www.wilder.gallery | info@wilder.gallery | +44 (0) 7747 635 823

WILDER