

KUDZU BLUE  
Anne Carney Raines

---

WILDER



Anne Carney Raines | Kudzu Blue

Opening Thursday 30th January 6.30-8.30pm

Wilder Gallery is pleased to present *Kudzu Blue*, the second solo exhibition of works by Anne Carney Raines with the gallery, presented in collaboration with Soho Revue.

The exhibition showcases a new body of work created by the artist since her relocation to the English countryside. Raines' recent work interweaves a profound connection to her Southern American roots with a rich tapestry of imagery drawn from British grand estates, historic properties, public footpaths, and the nuances of traditional English life. Key influences include the tapestries at William Morris's Kelmscott Manor and the dining room at Chastleton House. The artist was captivated by the effortless beauty, rich textures, and serene color palettes of the delicate Delft tiles adorning antique fireplaces and the dinner plates once displayed as artworks within these grand homes. *Warp and Weft I* and *II* exemplify Raines' desire to capture the charm of these decorative elements encountered during her exploration of these traditional English homes.

The exhibition's title, *Kudzu Blue*, acts as a reminder of Raines' U.S Southern roots. Kudzu, often referred to as "the vine that ate the South," is an invasive plant that blankets trees and telephone poles on the edges of towns and roadsides, taking upon monster-like forms. Introduced from Asia in the late 19th Century, Kudzu has dramatically reshaped parts of the Southern landscape, both physically and in myth. Stories of Kudzu's invasive vigour and aggressive growth have permeated literature and popular thought, to the point where it has become almost synonymous with the Southern landscape and experience. However, some argue that Kudzu rarely penetrates deep into the forest, thriving primarily alongside road and rail where it visibly dominates in gargantuan scale and spectacle. As such, Kudzu acts as a potent reminder of the idea of artifice in storytelling and representation.

In Raines' paintings, the idyllic pastoral countryside is juxtaposed with the dusty, warm tones of the American frontier. Cool colour palettes are disrupted, revealing and framing rich scenes of idealised landscapes. Creases ripple across the painted surface, mirroring the folds of fabric. Mountains, trees, and sky are reflected in the watery oasis at the base of the paintings. Drawing on her background as a scenic painter, Raines constructs

intricate environments that highlight the artifice of painting through the visual language of theatre and set design. Raines layers imagery, creating stage-like, theatrical settings that transform the canvas into a portal into her imagined world. Through implied doors and windows, the viewer is invited to enter (or exit) an existence open to interpretation. This sense of invitation suggests that the imagery itself is narrating a story – a deeply personal narrative that seems to speak to the inhabitants of these depicted landscapes.

**Anne Carney Raines** (b.1990) is a painter from Nashville, Tennessee currently living in the British countryside. She received her painting MA in 2021 at the Royal College of Art in London and is a three-time recipient of the Elizabeth Greenshields Foundation Grant. Anne Carney has a background in scenic painting and fabrication which has had a major impact on her artwork as she deals with topics around theatre, transitional space, and collective memory. She has her BFA in painting from Indiana University, Bloomington. Recent and noteworthy exhibitions include *Mind to Hand*, Incubator Art Projects, London (2024) ; *Inside/Outside*, Soho Revue, London, Drawing Biennial 2024, Drawing Room, London (2024) ; *Mi Basta Uno Scorcio*, Rubedo Arts, Milan (2024) ; *A British Museum Touring Exhibition Drawing Attention*, York Art Gallery – York, UK (2023); *Hopscotch (Solo)*, Soho Revue Gallery, London, UK (2023) ; *Pleasure Zones (Solo)* at Wilder Gallery, London (2022), *London Grads Now* at Saatchi Gallery, *New Contemporaries 2021* at Firstsite Gallery, and *New Contemporaries 2020* at South London Gallery.

Wilder Gallery, 77 College Road, London NW10 5ES  
www.wilder.gallery | info@wilder.gallery | +44 (0) 7747 635 823

---

WILDER



ANNE CARNEY RAINES

*Blauw, 2024*

Oil on linen  
120 x 135 cm  
47 1/4 x 53 1/8 inches





ANNE CARNEY RAINES

*Warp and Weft I, 2024*

Oil on linen

100 x 125 cm

39 3/8 x 49 1/4 inches



ANNE CARNEY RAINES

*Tin Glazed ii, 2024*

Oil on linen

100 x 125 cm

39 3/8 x 49 1/4 inches





ANNE CARNEY RAINES

*Warp and Weft II, 2024*

Oil on linen  
85 x 95 cm  
33 1/2 x 37 3/8 inches



ANNE CARNEY RAINES

*Shatter Cone*, 2024

Oil on linen  
65 x 70 cm  
25 5/8 x 27 1/2 inches



ANNE CARNEY RAINES

*Pea Soup*, 2024

Oil on linen  
30 x 35 cm  
11 3/4 x 13 3/4 inches





ANNE CARNEY RAINES

*18:30, 2024*

Oil on linen  
30 x 35 cm  
11 3/4 x 13 3/4 inches

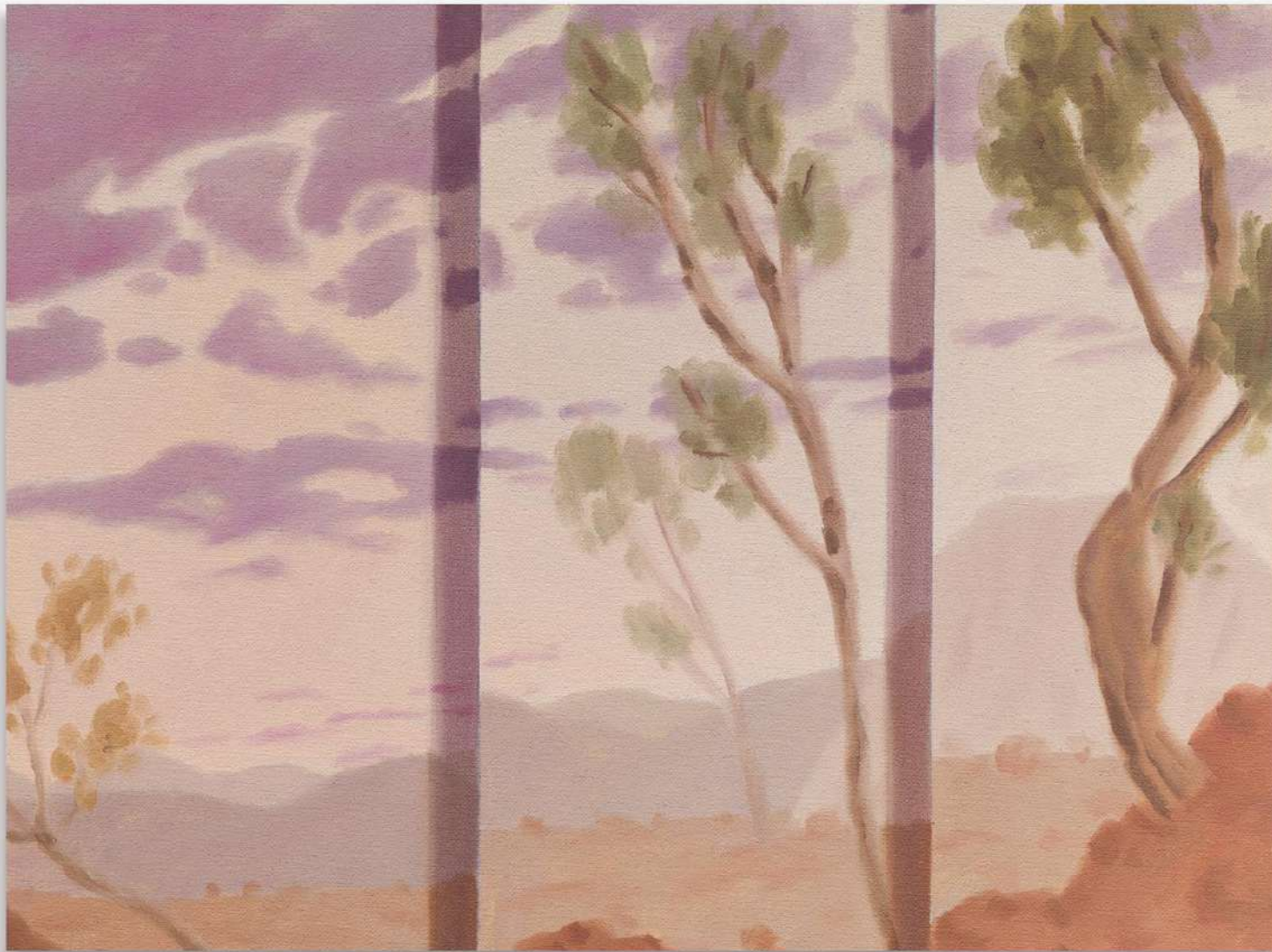


ANNE CARNEY RAINES

*Creeping Thistle I*, 2024

Oil on linen board  
30 x 40 cm  
11 3/4 x 15 3/4 inches





ANNE CARNEY RAINES

*Creeping Thistle II*, 2024

Oil on linen board  
30 x 40 cm  
11 3/4 x 15 3/4 inches



Portrait of Anne Carney Raines at Wilder Gallery by Demelza Lightfoot

#### Education

2021 The Royal College of Art, London, MA Painting  
 2014 Indiana University Bloomington, Bachelors of Fine Arts Painting, History of Art Minor

#### Solo Exhibitions

2023 Hopscotch, Soho Revue Gallery – London, UK  
 2022 Pleasure Zones, Wilder Gallery – London, UK

#### Select

##### 2024

Mind to Hand, Incubator Art Projects, London  
 Inside/Outside, Soho Revue, London  
 Drawing Biennial 2024, Drawing Room, London  
 Mi Basta Uno Scorcio, Rubedo Arts, Milan

##### 2023

A British Museum Touring Exhibition Drawing Attention, York Art Gallery – York, UK  
 Aggregate, Soho Revue Gallery - London  
 Window, Dans Les Yeux D'Elsa - Paris  
 Positions 1, Alma Pearl Gallery – London

##### 2022

Uprising, Kristin Hjellegjerde Gallery – Schloss Gorne, Germany  
 New Contemporaries 2021, South London Gallery – London, UK

##### 2021

London Grads Now, Saatchi Gallery, London, UK  
 Incubator 21 Duo Show , Marylebone, London, UK  
 New Contemporaries 2021, Firstsite Gallery – Colchester, UK  
 A Space to Hold the Gaze, Liliya Gallery - London, UK  
 Between the Acts, Duo Show with Catherine Repko, Wilder Gallery - London, UK  
 Final, Not Over, Unit 1 Gallery - London, UK  
 New Contemporaries 2020, South London Gallery – London, UK

##### 2020

Model Village

#### Collections

British Museum – Department of Prints and Drawings  
 Government Arts Collection  
 Hine Collection  
 Soho House Collection

#### Grants, Awards & Publications

2024 Elizabeth Greenshields Foundation Grant 3  
 2023 TaC Residency - Tuscany  
 2022 New American Paintings: Issue South #160  
 2021 Bloomberg New Contemporaries: Bloomberg Philanthropies: London, UK  
 2021 Hine Painting Prize  
 2020 Bloomberg New Contemporaries: Bloomberg Philanthropies: London, UK  
 2020 Elizabeth Greenshields Foundation Grant 2  
 2019 Elizabeth Greenshields Foundation Grant 1  
 2019 Ritzen Giving Fund Grant. Nashville, TN  
 2016 Studio Visit Magazine: Volume 34  
 2014 Studio Break Annual BFA Competition Winner

#### Exhibitions





Wilder Gallery partners with Own Art, enabling art buyers from the UK to acquire work between £100 - £25,000 over a 10 month interest free period. The artwork is delivered immediately and available to enjoy before the first instalment is paid. If you would like to purchase with Own Art or find out more please email Michelle [info@wilder.gallery](mailto:info@wilder.gallery).

Wilder Gallery, 77 College Road, London NW10 5ES  
[www.wilder.gallery](http://www.wilder.gallery) | [info@wilder.gallery](mailto:info@wilder.gallery) | +44 (0) 7747 635 823

---

**WILDER**